



TALA



THE GREAT AWAKENING : 2024 TALA PROFESSIONAL AWARD COMPILATION

THE

GREAT

AWAKENING



TALA
AWARDS
2024



THE GREAT

Over a decade, we have witnessed the gradual changes in our climate: rising temperatures, a diminishing winter season, and erratic weather patterns characterized by prolonged droughts in some years and severe flooding in others.

Awareness of environmental issues and global warming has significantly increased. 2024 is projected to experience intense El Niño and La Niña events, with record heat levels reported across 38 provinces of Thailand, affecting over 50% of the land area.

The **HEATWAVES** have caused the UV Index to rise to hazardous levels, prompting the government to advise citizens to seek shade during the daytime.

These extreme temperatures have resulted in rising sea levels, leading to significant

CORAL BLEACHING events, with Thailand observing such occurrences in 21 national marine parks.

Furthermore, the recent **FLOODING ISSUES**

in Thailand's northern regions show that our environment has reached its critical point. The environmental phenomena and challenges we faced last year may serve as a wake-up call for all of us—citizens, public entities, and private organizations alike—who have come to realize that environmental issues have an unavoidable impact on our lives, work, and businesses.

"THE GREAT AWAKENING"

encourages us to engage actively in transformative efforts in various ways, including reducing carbon emissions, utilizing renewable energy, minimizing consumption and waste, implementing long-term environmental planning, planting trees and creating green spaces, as well as designing landscape architecture that is friendly to the environment.

Let us unite in creating sustainable solutions for the world and ensure a better environment for future generations.

AWAKENING

CONTENTS

MESSAGE FROM
TALA PRESIDENT

06

MESSAGE FROM
2024 TALA NIGHT'S CHAIRPERSON

07

AWARD PARTICIPANTS

08

AWARD
CATEGORIES

10

JURY PANELS

12

2024 TALA AWARD
COMMITTEE

16

TALA
PROFESSIONAL AWARD
2024

20

- 🏠 PRIVATE RESIDENCES
- 📁 GENERAL DESIGN :
 - RESIDENTIAL COMPLEX
 - COMMERCIAL SPACE
 - HOSPITALITY
 - INSTITUTION CAMPUS
 - PUBLIC SPACE : PRIVATE OWNED
 - PUBLIC SPACE : NON-PRIVATE OWNED
 - OTHERS
- 🌐 MASTER PLANNING :
 - DOMESTIC-INTERNATIONAL PROJECT
- 📐 LANDSCAPE ART / EXHIBITION
- 📍 COMMUNITY SERVICE / WORKSHOP



DISTINCTIVE WORK

222

ADDITIONAL ENTRIES

226

TALA WORKSHOP

236

SPECIAL THANKS TO
AND SPONSORS

244

TALA SPONSORS,
TALA NITIVI PARTNERS
AND TALA MEMBERS

246

2024 TALA
PROFESSIONAL AWARDS
COMMITTEES

247



MUNGGORN
CHAIJAROENMAITRE

MESSAGE FROM TALA PRESIDENT

Dear TALA Members
and professional friends,

In an era where global warming poses a critical challenge to humanity, landscape architecture has become increasingly significant. We must consider environmental changes to create spaces that are not only beautiful but also sustainable and harmonious with nature.

Recognizing this importance, the Thai Association of Landscape Architects (TALA) has been committed to promoting and developing the landscape architecture profession continuously. One of our key initiatives is the TALA Awards Night, held annually to honor and showcase outstanding works by Thai landscape architects and those who contribute to the development of Thailand's landscape industry, including academics, designers from related fields, construction professionals, and real estate experts.

This year's 2024 TALA Awards Night, under the theme "The Great Awakening," is expected to welcome over 250 participants from all sectors of the landscape industry, reflecting the collective strength, cooperation, and advancement of Thailand's landscape architecture field.

Thai Association of Landscape Architects extends its congratulations to all members and landscape architects who have received prestigious awards for their designs that address the impacts of global warming. We hope that your success will inspire the new generation of landscape architects to create green spaces that are not only aesthetically pleasing but also address the challenges of global warming, contributing to the development of a sustainable environment for future generations.

Thank you very much.

MESSAGE FROM 2024 TALA NIGHT'S CHAIRPERSON



CHANIPAT
CHAVANANONT

Dear Friends
and TALA Members,

The TALA Awards Night is an annual event of great significance for the Thai landscape architecture community. Beyond being the stage for announcing the TALA Professional Awards, it is a wonderful opportunity for us to reconnect, celebrate, and share experiences from the past year.

This special night fosters an atmosphere of friendship, celebrating the achievements of award winners and sharing inspiration from the creative work of fellow professionals: both seasoned experts and emerging talents. These works collectively demonstrate the continuous development and rising standards of Thai landscape architecture.

The TALA Awards Night also serves as a platform to connect professionals in the landscape industry, including contractors, suppliers and academics. These collaborations drive our field's continuous growth and development.

In 2024, as we face increasingly severe climate crises such as heat waves, coral bleaching, and rain bomb, this event with the theme 'The Great Awakening: Exploring New Frontiers' reflects both challenges and new opportunities in landscape architecture in an era of rapid environmental change. It strongly reinforces our mission to create sustainable green spaces for society.

On behalf of the organizing committee, I would like to thank all the sponsors who supported tonight's event. I sincerely hope that this gathering—as we bid farewell to the old year and welcome the new—will be memorable and give inspiration for the continued growth of Thai landscape architecture.

AWARD PARTICIPANTS

TROP: terrians + open space (TROP COMPANY LIMITED)

W: www.trop.land
E: admin@trop.land, nicha@trop.land
T: 02 538 4748
F: 02 956 1526

Mr. Teeradon Promjantuek

E: eeiamamee@gmail.com
M: 093 398 9585

1819 Company Limited

W: www.1819studio.com
E: info1819@gmail.com
FB: www.facebook.com/1819design
T: 02 116 5579
M: 085 415 2687

Archive Landscape Co., Ltd.

W: www.archivestudio.org
E: pannavit.k@archivestudio.org, landscape@archivestudio.org
T: 02 235 6695
F: 092 979 1115

SHMA Co., Ltd.

W: www.shmadesigns.com
E: admin@shmadesigns.com
T: 02 390 1977
F: 02 390 1974

Landscape Tectonix Limited

W: www.landscapetectonix.com
E: info@landscapetectonix.com
T: 02 266 5898-99

Redland-scape Limited

W: www.redland-scape.com
E: infos@redland-scape.com, chananya@redland-scape.com
T: 02 158 1214-16
M: 085 260 6562

RAFA Design Office Co., Ltd.

W: www.rafa.co.th
E: rafa@rafadesign.com, rakchanok@rafadesign.com
T: 02 661 8130-1
F: 02 661 8132

Landscape Collaboration Co., Ltd.

W: www.landscapcollaboration.com
E: info@landscape-co.com, admin@landscape-co.com
T: 02 248 1143

Landscape Architects 49 Limited

W: www.L49.co.th
E: L49@L49.co.th, apaporn@L49.co.th
T: 02 661 2618

P Landscape Co., Ltd.

W: www.plandscape.com
E: info@plandscape.com
T: 02 261 3700
F: 02 258 3588

TK Studio Co., Ltd.

W: www.tkstudio.co.th
E: info@tkstudio.co.th
T: 02 229 4289
F: 02 229 4789

ShmaSoEn Co., Ltd.

W: www.shmadesigns.com
E: admin@shmasoen.com
T: 02 390 1977
F: 02 390 1974

P.L.Design Company Limited

W: www.pldesign.co.th
E: pldesign@pldesign.co.th
T: 02 615 4967, 083 098 1688

Studio Taila Co., Ltd.

W: www.studiotaila.com
E: exeed@studiotaila.com
T: 02 513 9289, 081 493 7455
F: 02 513 9288

Arsomsilp Community and Environmental Architect Co., Ltd.

W: www.arsomsilp.ac.th
E: Chatchanin@arsomsilparchitect.co.th, Admin_arch@arsomsilp.ac.th
T: 02 490 4742
M: 090 971 9339

vvdesine landscape Architect Co., Ltd.

E: Admin@vvcwlandscape.com
T: 02 039 3075
FB: VVdesine Landscape Architecture

Real Space Maker Co., Ltd.

W: www.realspacemaker.com
E: realspacemaker@gmail.com
T: 02 637 8704
FB: REAL space maker
IG: realspacemaker

XSiTE Design Studio Co., Ltd.

W: www.xsitedesignstudio.com
E: project@xsitedesignstudio.com
T: 02 158 7399
F: 02 998 2063

Pooritat Kunurat

E: Prouddesign.contact@gmail.com
M: 080 439 5635

Studio JEDT Co., Ltd.

E: jedtgroup@gmail.com
T: 089 699 8426

Lokoh= Co., Ltd.

E: lokoh_lokoh@yahoo.com, studiolorokoh@gmail.com
M: 081 682 8683, 081 987 3406

AWARD CATEGORIES

01 PRIVATE RESIDENCES (PR)

A private space (or spaces) within an individual residence such as a detached housing, townhouse, and condominium (personal unit only)

02 GENERAL DESIGN (GD)

1. Residential Complex (GD_RC)

A common space (or spaces) in a residential complex such as a housing development, a townhouse project, a condominium, etc.

2. Commercial Space (GD_CS)

Landscape planning and design for a commercial project such as a department store, a shopping mall, a market, a theme park, a water park, a sale office, etc.

3. Hospitality (GD_HO)

Landscape planning and design for a hospitality project such as a resort, a hotel, a rehabilitation center, a nursing home, etc.

4. Institution / Campus (GD_IC)

Landscape planning and design for institutions or organizations such as a headquarter complex, an education related facility/campus, a research center, a public or private institute, a museum, etc.

5. Public Space: Private Owned (GD_PO)

An open space owned by private sectors opened to public with or without any limitation. For example: a park in a residential complex, a playground, an urban plaza/ a park in front of the mall, etc.

6. Public Space: Non-private Owned (GD_NO)

A public open space owned by public sectors such as a public park, a waterfront area, a streetscape, an urban plaza, a community space, a sport/recreation facility, etc.

7. Others (GD_OT)

Other projects which are not matched to any sub-category in General Design Category

03 MASTER PLANNING: DOMESTIC – INTERNATIONAL PROJECT (MP)

Long-term master plan, which is a real project, such as a university master plan, a public/ private organization, a community plan, a residential complex master plan, a planning of large public area, an ecosystem/environmental restoration master plan, a master plan for a conservation area, etc.

* As it is a long-term project, it is not necessary to be completely built before the submission date

04 LANDSCAPE ART / EXHIBITION (LE)

Art and exhibition responded to landscape architecture context such as Land Art, Earth Sculpture, Environmental Art, Installation Art / Media Art, etc.

* All projects need to be completely built and operated before the submission date.

05 COMMUNITY SERVICE / WORKSHOP (CW)

A landscape architecture project that create a participatory process between designers, community, and stakeholders to create place making that benefits the quality of life and living of the community.

* The participatory and design process must be completed and available to the public before the submission date.
* The submitted projects need to be located in Thailand only.

06 DISTINCTIVE WORK

A distinctive and memorable landscape architectural project that has maintained the original design (or really close to its original conditions). The work which is demonstrating the development of landscape architecture in Thailand and having significant impact to the public and neighborhood, or providing educational values. To be a distinctive landscape architectural works from the past to the present, it must be completely built within the past 15 to 50 years, regardless of the type of projects, whether it is a private or a public area. The project must be located in Thailand.

* The project needs to be nominated by a member of the Thailand Association of Landscape Architects. The nominee needs to give a summary of the project's value and memorable aspects along with a brief description and images.

JURY PANELS



"PEOPLE SAY BUILDING IS A MUSIC NOTE TO THE CITY MUSIC, BUT IT WILL NEED MUCH MORE THAN A NOTE TO COMPOSE A GOOD MUSIC SUCH AS RHYTHM, AMBIENT, OR TONE ETC. THE CONTEXT OF THE CITY, THE URBAN AND THE LANDSCAPE ARE ALTOGETHER ESSENTIAL ELEMENTS TO CREATE HARMONY OF ALL THAT SHAPES EACH CITYSCAPE AS THE GREAT CITY SYMPHONY."

ASAE SUKHYANGA

President of The Association of Siamese Architects Under Royal Patronage

Asae Sukhyanga is an architectural graduate from King Mongkut Institute of Technology Ladkrabang (KMUTL) in 1991. He completed his M.Arch from the University of Michigan (Ann Arbor, USA) in 1994.

Since 1995, he has been working as an architect under his family business Architecture company (IT International Co., Ltd. 1983). He started his career with the reengineering-renovation of 80+ bank branches (The Union Bank of Bangkok Public Company Limited, Thailand) and has since worked on many more private sector projects.

As an Architectural consultant, he has collaborated with many leading engineering firms on the architectural part of many government projects, including numerous MRTA stations in Bangkok and several airport facilities projects.

From 1997-2016, Asae was a lecturer at KMUTL Architecture school. Since 1996, he has been involved in his private property and land development in Khaoyai, Chiangmai, Chonburi, and Bangkok.

In 2024-2026, he was elected to serve as the President of Association of Siamese Architects Under Royal Patronage (ASA) on the 90th Anniversary, continuing the legacy of his grandfather who was a co-founder and the first President of ASA.

"GREAT DESIGN DOES NOT ALWAYS SEEK TO STAND OUT, BUT RATHER SEAMLESSLY INTEGRATES AESTHETICS, FUNCTIONALITY, AND SERVICE TO HUMANITY. IT IS A DESIGN THAT GENUINELY FULFILLS THE NEEDS OF PEOPLE WHILE HUMBLY RESPECTING ITS CONTEXT."

PONGPIPHAT CHANGPHAN

President of the Thai Urban Designers Association (TUDA).

About 20 years of professional experience in urban design in Thailand. Currently the founder and Managing Director of Urban Space Company Limited.



"WE HOPE THE 2024 TALA PROFESSIONAL AWARDS WILL NOT ONLY CELEBRATE OUTSTANDING LANDSCAPE DESIGNS BUT ALSO INSPIRE DEVELOPMENTS TO TAKE MEANINGFUL STEPS TOWARD CARING FOR OUR ENVIRONMENT."

MUNGGORN CHAIJAROENMAITRE

**Registered Landscape Architect, Architect Council of Thailand
President, Thai Association of Landscape Architects (TALA)
Partner, IXORA Design Limited**

Munggorn is a current president of Thai Association of Landscape Architects (TALA) and has over 25 years wide-ranged experience in landscape design, urban design and construction management for various project types including major infrastructures, resorts, hotels, public parks, commercial retail mixed use centers, high-density residential developments, and private residences. His experience includes mass transportation strategic planning, urban design and landscape architectural projects located in Thailand, Southeast Asia, Australia, China, the Middle East, and the United States.

While Munggorn has developed practical project implementation skills, he also comprehends the value of space management and programmatic requirements for various project types. His expertise lies in creating strong and simple contemporary design solutions which often contain complex conceptual design layering.

With his broad-based knowledge, diverse professional backgrounds and varied experience in landscape architecture, urban design, and construction management, Munggorn brings depth to lead the team with his deep understanding of complex design resolution across an assorted range of projects.

*"IMPRESSIVE WORK FROM ALL PARTICIPANTS. THE CREATIVITY THOUGHTFUL DESIGN IN MOST WORKS SHOW HOW TO BLEND AESTHETICS WITH FUNCTIONALITY, MAKING THE NATURAL ENVIRONMENT AN INTEGRAL PART OF HUMAN EXPERIENCE. OVERALL WORK IS IN HIGH QUALITY WHICH DEMONSTRATES OUR LANDSCAPE PROFESSIONAL STANDARD."
(LOOKING FORWARD TO SEEING MORE OF EXCITING WORKS IN 2025 TALA AWARDS!)*



ASSISTANT PROFESSOR APINYA LIMPAIBOON

**B.L.A (CHULA) M.L.A, Cert.U.D.
(University of Pennsylvania)**

Apinya Limpaiboon is a licensed landscape architect and a former fulltime instructor in School of Architecture and Design, KMUTT, Thailand. Her last position was a director of Design for Environmental and Sustainable Development Lab (D/E/S Lab) and Chair person of Landscape program, SoA+D, as well as teacher landscape architecture and planning related courses.

Her past works were related to landscape planning both in urban and rural contexts, including the Master Plan Study for several Royal Projects and Mahamongkut's Buddhism University, Salaya. She has been responsible to lead the design of 3 KMUTT campus Master plans and Bangmod Learning Garden which undertaken under Physical Management Unit (PMU). She is now special instructor in Chulalongkorn University, KMUTL and KMUTT.

"AS A JUROR OF THIS NATIONAL DESIGN COMPETITION, I AM INSPIRED BY THE DEDICATION AND CREATIVITY OF ALL PRACTITIONERS, STUDENTS, AND SCHOLARS IN OUR FIELD OF LANDSCAPE ARCHITECTURE. YOUR WORK ENHANCES THE QUALITY OF LIFE FOR PEOPLE AND THE ENVIRONMENT—A RESPONSIBILITY THAT HAS NEVER BEEN MORE IMPORTANT. THE IMPRESSIVE INCREASE IN SUBMISSIONS IS CLEAR SIGN THAT OUR INDUSTRY IS GROWING RAPIDLY, WITH MORE TALENTS CONTRIBUTING TO THE INNOVATION AND IMPACT WE ARE KNOWN FOR. SEVERAL PROJECTS ARE NOW RECOGNIZED GLOBALLY, CELEBRATED FOR THEIR EXCELLENCE AND VISION. THIS INTERNATIONAL RECOGNITION IS A TESTAMENT TO THE TALENT AND DRIVE YOU BRING TO EVERY PROJECT.

I ENCOURAGE EACH OF YOU TO KEEP PUSHING BOUNDARIES AND STRIVING FOR EXCELLENCE. YOUR EFFORTS ARE CREATING A LASTING LEGACY, SHAPING A BRIGHTER, MORE SUSTAINABLE FUTURE FOR ALL. LET'S CONTINUE TO ELEVATE OUR FIELD TOGETHER, SHOWING THE WORLD WHAT WE CAN ACHIEVE."



ASSISTANT PROFESSOR SHUSAK JANPATHOMONG, PH.D.

Assistant Professor in Policy and Planning Sciences and Director of the International Program in Design and Architecture (INDA) at the Faculty of Architecture Chulalongkorn University

With over three decades of experience in multidisciplinary projects, his expertise spans from large-scale master planning to site-scale landscape design, serving both public and private sectors in the U.S. and internationally. His work includes institutional, tourism, resort development, community, urban landscape, urban design, and residential projects.

Dr. Janpathompong began his career in 1988 after earning his Bachelor of Landscape Architecture (BLA) with honors from Chulalongkorn University.

He continued his studies at Cornell University, where he received the National ASLA Award of Honor, and Harvard University, where he earned the Letter of Commendation for Outstanding Achievement. He later completed his Ph.D. at the University of Tsukuba, Japan, with a focus on research and academia. Early in his career, he served as a senior associate at Sasaki Associates Inc. in Boston, USA. In 2009, he established his own practice and has been a full-time faculty member at Chulalongkorn University since 2019, where he also served as Assistant Dean in Research before becoming the Director of INDA.



"IT WAS AN HONOR TO SERVE AS THE TALA AWARDS COMMITTEE THIS YEAR. I AM THRILLED TO HAVE HAD THE OPPORTUNITY TO REVIEW SUCH AN IMPRESSIVE ARRAY OF HIGH-QUALITY LANDSCAPE ARCHITECTURE PROJECTS. MANY OF THESE ENTRIES NOT ONLY EXEMPLIFY EXCELLENCE IN DESIGN BUT ALSO UNDERSCORE THE PROFOUND IMPACT OUR PROFESSION HAS ON COMMUNITIES AND THE ENVIRONMENT WORLDWIDE."

ASSOCIATE PROFESSOR KASAMA POLAKIT, PHD

Associate Professor, Faculty of Architecture, Chiang Mai University, Thailand

1982 BArch (Hons) Chulalongkorn University
 1998 MPD (Master of Planning and Design – Urban Design) The University of Melbourne, Australia
 2004 Doctor of philosophy, The University of Melbourne, Australia
 1996-2004 Lecturer, Faculty of Architecture, Kasetsart University, Thailand.

2005-2006 Adjunct Professor, School of Architecture, Florida Atlantic University, USA.
 2006-2014 Assistant Professor, School of Urban & Regional Planning, Florida Atlantic University, USA.
 2014-2018 Associate Professor, urban Design center, College of arts and architecture The University of Idaho, USA.
 2018-Present Associate Professor, Faculty of Architecture, Chiang Mai University



"LANDSCAPE AND BOTANY WORK COULD BE HUMANITY'S SOLUTION IF WE PRIORITIZE ENVIRONMENTAL SUSTAINABILITY."

RUSH PLEANSUK

Design Director and a Board Member of Sumphat Gallery

His expertise and love of nature extends to the art field, where his love of nature has collaborated with prestigious international brands such as Cartier, Audemars Piguet, and Dior, bringing modern art and knowledge to a global audience.

In addition to his professional achievements, Mr. PLEANSUK teaches design and marketing in the Fine Arts Master's program for international students, furthering his influence in shaping the next generation of creative professionals.

Mr. PLEANSUK holds a Bachelor's degree in Architecture from Kasetsart University in Thailand, where he focuses on architectural design and environmental sustainability. He furthered his education with a Master's degree in Architecture and Landscape from the National Superior School Architecture and Landscape De Bordeaux in France, specializing in timber construction and environmental standards.

His design philosophy is deeply rooted in sustainability and the belief that architecture and design should serve both the community and the environment, reflecting his continuous dedication to merging aesthetic excellence with practical solutions for global challenges.

Mr. Rush PLEANSUK is a figure in the realms of design, architecture, and creative industries, with a career marked by extensive contributions and recognition both in Thailand and internationally. His work has been widely published in various media outlets, showcasing his innovative approach to problem-solving through design.

His commitment to addressing community and environmental challenges is evident in his architectural projects and product designs, many of which have been developed in collaboration with over 300 communities across Thailand. Among his key achievements are the Designer of the Year 2019 award, the Prime Minister Award for 2019-2020, the G Mark from Japan, and the Demark Award, all of which recognize his excellence in design and innovation. Notably, Mr. PLEANSUK has played a pivotal role in developing infrastructure systems for wildlife rescue centers, addressing environmental concerns through sustainable architectural and product design solutions.



2024 TALA PROFESSIONAL AWARD COMMITTEES

With blind review process, for the qualifying round, the judging team consisted of four landscape architects, from both academic and professional areas. Regarding the final round, three additional committees, both with design background and non-design background, worked together with the first committee team.

The process of selecting nominees in each category was determined by consensus of the jury. To reach an agreement on the winners, the Jury open-debated all projects in consideration.





TALA
AWARDS
2024



AWARD
CATEGORY

01

PRIVATE RESIDENCES (PR)

A private space (or spaces) within an individual residence such as a detached housing, townhouse, and condominium (personal unit only)



AWARD OF
EXCELLENCE



Private Residences | AWARD OF EXCELLENCE



OPUS ONE

Shenyang, China

TROP: TERRAINS + OPEN SPACE

The Opus One transforms exceptional complexity through creativity. Despite its modest footprint, which is less than 300 sqm., it marries classic elegance with contemporary flair creating various functions to promise an ever-evolving experience for all who encounter it. By creating landscapes, we can break away from northern landscapes. By transforming building pipelines into landscape designs and incorporating plants, we can effectively mitigate the urban heat island effect.



This establishes a pleasant micro-climate that enhances biodiversity and attracts birds in their natural habitat. Ultimately, this ecological oasis becomes an integral part of the bustling urban center.

The project involves converting a storage roof in a mixed-use tower in Shenyang, China, into two gardens. Despite the simple goal, the renovation faces challenges like dominant ventilation ducts dividing the space, a low ceiling height of 3.4 m, and limited material transport through a single freight elevator. The design strategy focuses on concealing equipment and utilizing space between columns.

The “Black Garden” embraces a more is more, with connected black spaces forming a mysterious and luxurious environment. The entrance blends indoor and outdoor areas with lush greenery and mirrored details divided into dining and resting areas, featuring unique air planting boxes and hanging plants. A sculptural staircase connects the upper and lower levels. A two-storey floating corridor with a central resting platform offers panoramic views and allows natural light to permeate the lower space, reducing the sense of confinement in the sunken area.

In contrast, the “White Garden” is inspired by simplicity. Complex pipelines are organized into simpler spaces, including a dry garden, sunken living room, and barbecue area with river views. The use of white mesh enhance slight and shadow effects, creating a luminous-dreamy ambiance. walkways, seating, and outdoor steps correspond beautifully with the house’s modern architecture, collectively providing comfort and tranquility that is simple yet beautiful and gratifying at the same time.

Lead Designer :
Pok Kobkongsanti

Landscape Architect :
Fusang Ren, Huamei Yin
Siyi Lu, Pengtao Sang

Client/Owner :
Shenyang Yanlord Land

Prime Contractor :
Anhui Kangle Garden Construction

Photography Credit :
Holi

Architect :
Tange Associates

Interior Architect :
Pulina Exclusive,
T.K. Chu Design LTD, CCD



ANGKINAN RESIDENCE

Petchaburi, Thailand

ARCHIVE LANDSCAPE CO., LTD.

This project involves the design of a private residence for a family of four, situated on a 4-rai plot in Phetchaburi Province, adjacent to the Phetchaburi River. The site features a slope descending from the rear of the house, which borders the river, to the front road, with a vertical elevation difference of 2 meters. The orientation of the house and its associated structures has been meticulously planned to maximize functional space. Given that the homeowner serves as the Deputy Mayor of the province, there is a specific requirement to separate the guest reception area at the front of the house from the private living spaces located at the rear. The design incorporates a symmetrical layout, establishing a central axis for the residence. The front area, encompassing both the road and the garden, is designed to achieve a formal and balanced aesthetic, thereby enhancing the prominence of the residence. This section is designated as an event space capable of accommodating approximately 200 guests for significant occasions, featuring a fountain that serves as a stage, with the house as a picturesque backdrop.

The rear section of the property is dedicated to private relaxation, characterized primarily by green spaces, which distinctly separates it from the front area. This section is further divided into two distinct zones. The first zone, aligned with the central axis, maintains the symmetrical design and is intended for entertaining close friends and family, featuring a large dining table as the focal point, complemented by a backdrop of greenery. The second zone, located adjacent to the house, is designed as a personal retreat, incorporating an exercise pathway, a putting green, and a riverside gazebo—key requirements and activities for the family. This area is designed to harmonize naturally with the surrounding context, contrasting with the more formal character of the front space.

The selection and placement of vegetation have been carefully considered to enhance the central axis of the residence.

Aesthetic trees with attractive forms and seasonal flowering plants are chosen to create visual interest. In the lateral area of the house, a diverse array of evergreen trees is selected to achieve a natural appearance, while requiring minimal maintenance. Furthermore, the design incorporates mounds and ground cover plants to reduce upkeep demands, given the substantial size of the property.

In terms of water drainage management, the existing topography is leveraged to facilitate the natural flow of surface water toward the front road, ensuring effective drainage.

This design consideration simplifies management, particularly in light of the considerable scale of the residence, with a strong emphasis on functionality and ease of maintenance.



Lead Designer :
Pannavit Khotavivattana

Landscape Architect :
Pornpat Attachitwatin

Client/Owner :
Polyut Angkinan

Photography Credit :
Chakkrachob Sermphasit
Tinnaphop Chawatin



HONOR
AWARD



Private Residences | HONOR AWARD

Y2 RESIDENCE

Bangkok, Thailand

LANDSCAPE TECTONIX LIMITED

As a landscape architect was appointed to work on this private residence for a lovely family, we started to work with a discussion with the owner who passionately intended to build a new home in the heart of Bangkok's CBD after spending their childhood in a family's house in the outskirts of Bangkok. A place full of memorable moments of large greenery, fresh air and gentle wind.

The owner's reminiscence of big trees, large pond, spacious lawn, flora and fauna became an inquisitive question to us, what we can do, what design strategy we look for and what kind of design approach we should define for a new garden in an urban context which the space is pretty limited and compacted.



Thanks to a painting from a famous Thai artist, Supmanee Chaisansuk, "Memory of Green (2022)" which inspired by the artist's impressive childhood memory living in a house surrounded by the pristine nature. This 120x100 cm. acrylic painted on canvas artwork, became an inspiration in landscape design of Y2 Residence. The design concept therefore subtly defines unique characteristics of the garden illustrating the transformative interpretation of the garden in urban context.

1. Green Intimacy at the front yard as the garden at the arrival, this garden features simple yet pleasant greenery composing of an open lawn and multi-layering plant with water feature. This outdoor space

therefore defines a private space, encourages a human sense and serves as family's multi-purpose outdoor space.

2. Green Canvas at the central courtyard Intentionally serves as a living painting which can be seen from the main living space and other rooms, this garden features artistic composition of the garden's elements, signature tree, boulder, shrub and groundcover as well as waterspout.

3. Pampering Green at the swimming pool The garden offers greenery in various textures, shapes and sizes in order to enhance both the swimming pool's ambience and walking passage connecting from the garage to the main living space.

4. Blossom Green at the pocket garden. As an iconic feature, Blossom green always defines a green feature in both architectural and interior spaces. The landscape design ultimately depicts an important role in design to create the seamless integration to both architectural and interior spaces as well as offers both visual and functional spaces to the private residence in an urban context.

Lead Designer :
Supasit Tepumnasakul

Client/Owner :
Khun Big and Khun Tarn

Photography Credit :
PanoramicStudio

Architect and Interior Designer :
WARchitect



KRITCHAWAT RESIDENCE

Bangkok, Thailand

XSITE DESIGN STUDIO CO., LTD.

This project is designed for a Chinese-Thai family residence. The homeowner has a deep connection to Chinese culture and wishes to express his love for his mother through this house. He wanted the garden to reflect the principles of Chinese Feng Shui, creating a favorable environment for living and enhancing the family's well-being. The landscape architect embraced the fusion of traditional Chinese cultural values with modern living, seamlessly blending it with the natural environment of Thailand. The design presents luxury in a simple and contemporary form, perfectly capturing the homeowner's vision.



Symbols representing the connection between past and present are used in the design, telling the story of cultural significance through landscape elements like a waterfall and a mountain symbol, reflecting Feng Shui principles. These features illustrate the balance between prosperity flowing into the home (water) and enduring stability (mountain), aligned with the concept of Yin and Yang, symbolizing wealth and peace.

The design not only respects cultural traditions but also creates an auspicious environment, fostering happiness, relaxation, and vitality for the residents.

The garden space is carefully aligned with the symmetry of the architecture and the interior of the house, enhancing the elegance and orderliness of the home. Chinese cultural symbols are thoughtfully presented through design details such as curved tiles, bamboo, and sculptures that reflect Chinese heritage. These elements are skillfully incorporated into a modern design language, emphasizing clean lines

and natural materials like marble, granite, and natural stone, offering understated luxury with delicate craftsmanship.

Complemented by lush greenery, tropical plants were selected not only for their suitability to Bangkok's climate but also for their vibrant, refreshing atmosphere, ideal for a peaceful, serene living environment. The entire project is designed to be easy to maintain, aligning with a lifestyle that seeks balance between nature and beauty in everyday life.

This project embodies Modern Chinese design, blending the auspicious beliefs of Thai-Chinese culture with a contemporary style suited for modern living. It incorporates native plants that are refreshing, easy to maintain, and uniquely reflect the identity of the residents. The overall design creates a space that deeply resonates with cultural heritage, luxury, and modernity, telling the beautiful story of the past while harmonizing with the present to meet the demands of contemporary living and clearly express the story of the homeowner.



Lead Designer :
Thotthanet Luekijna

Client/Owner :
Kritchawat Voravanich

Prime Contractor :
19th Landscape Co., Ltd.

Architect and Interior Designer :
JARKEN Co., Ltd.

Photography Credit :
JARKEN Co., Ltd.



AWARD
CATEGORY

02

GENERAL DESIGN

**RESIDENTIAL
COMPLEX**
(GD-RC)

A common space (or spaces) in a residential complex such as a housing development, a townhouse project, a condominium, etc.



AWARD OF EXCELLENCE



GENERAL DESIGN : Residential Complex | AWARD OF EXCELLENCE

KAVE TOWN COLONY

Pathum Thani, Thailand

REDLAND-SCAPE LTD.

Located in the suburban area, the Kave Town Colony is going to be a new masterpiece that promises to redefine suburban living in Thailand. Nestled strategically near Bangkok University, without adequate facilities to support them, this new Colony was established to be the campus community for supporting the activity for all users. To tailor our design to the variety of personalities, we utilized the MBTI framework categorizing users' personality types in four dimensions: Extraversion/Introversion, Sensing/Intuition, Thinking/Feeling, and Judging/Perceiving to identify different user characteristics in each faculty of this University. All 16 personality types have been categorized into 4 groups: Explorer, Diplomat, Sentinel, and Analyst to transform this unique character to be the landscape design for determining their goal, interests, and preferred activities. From the diverse lifestyle of our users, we merged various elements into the project where different lifestyles coexist harmoniously. Our design concept revolves around the idea of oxymorons, blending contrasting elements to create something unique.

In the differentiation of each group's distinctive personality traits, various functions are incorporated to create unique patterns according to the activity styles. But people always change their thoughts, perceptions, and feelings at anytime, after determining the zones for each group, we then seek connections to bridge the gaps and showcase the individuality of each divergent group. The iconic bridge was created to be the center of this project, serving as a link to connect the diverse characteristics of each group.

More than just a physical link, it symbolizes the integration of diverse personalities and spaces, bringing together different dimensions into a collective unity. Through the oxymoron concept, the bridge design was created a structure that stands out yet feels balanced.

This approach ensures the bridge reflects the energetic and diverse spirit of the young generation. With repeating geometric modules, the oxymoron bridge creates rhythmic space with subtraction modules to add variation of space. More than a connector, the bridge invites users to interact and promoting new social connections. Through innovative landscape design, this project redefines urban living, offering residents an unparalleled experience that celebrates the beauty of diversity and the power of convergence. The Kave colony will be the coexistence of all group without compromising their individuality but creating new things to live together and be in balance.

Lead Designer :

Pasongjit Kaewdang

Landscape Architect :

Nipaporn Vibulchak (Managing Director)
Noraset Siriaphornthum
Fatif Paramal
Satida Sarasalin

Client/Owner :

ASSETWISE PUBLIC COMPANY LIMITED

Prime Contractor :

T.PEERAGRICH CO., LTD.

Photography Credit :

Mr. Rungkit Charoenwat

Architect :

DB STUDIO COMPANY LIMITED

Interior :

TIDTANG STUDIO COMPANY LIMITED

Main Contractor :

T.PEERAGRICH CO., LTD.

Softscape Contractor :

UANBANGNA GARDEN COMPANY LIMITED





AWARD OF
EXCELLENCE



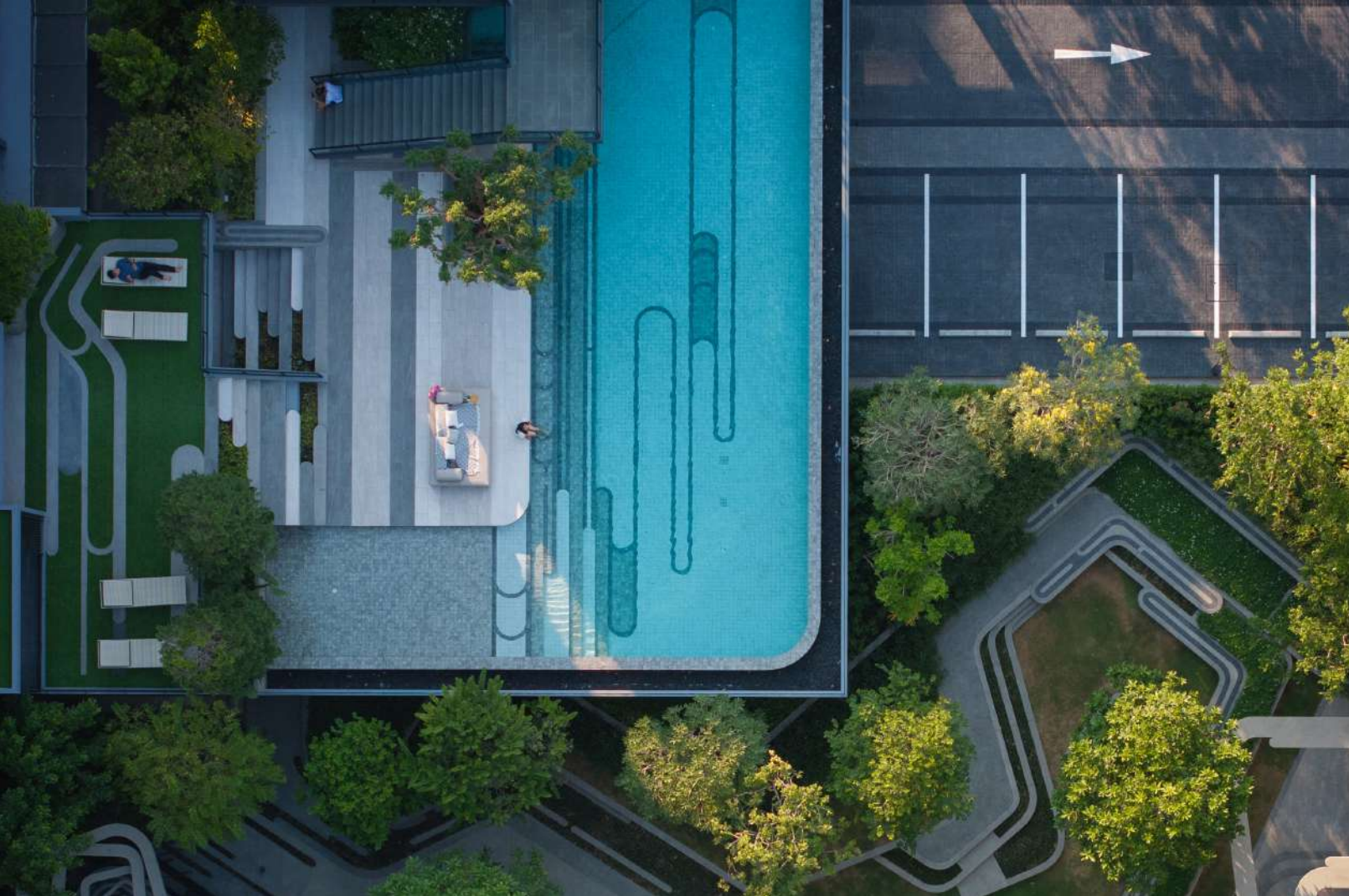
PREMIO UNIC EKKAMAI - LADPRAO

Bangkok, Thailand

VVDESINE LANDSCAPE ARCHITECTURE COMPANY LIMITED

Our design philosophy is rooted in the belief that architecture should not only serve human needs but also enhance the surrounding environment. This commitment leads us to the project concept, which is to create a sanctuary for both residents and urban wildlife.

To achieve this, we have meticulously selected a diverse array of plant species, ensuring that our community is a lush tapestry of flora. By redefining privacy through abundant tree planting, we offer more than just seclusion; we cultivate a thriving habitat for birds, squirrels, and beneficial insects. This thoughtful selection promotes a vibrant ecosystem, allowing a variety of animals to find food and shelter. The result is a living environment where nature and community coexist in harmony, enhancing the quality of life for all inhabitants.



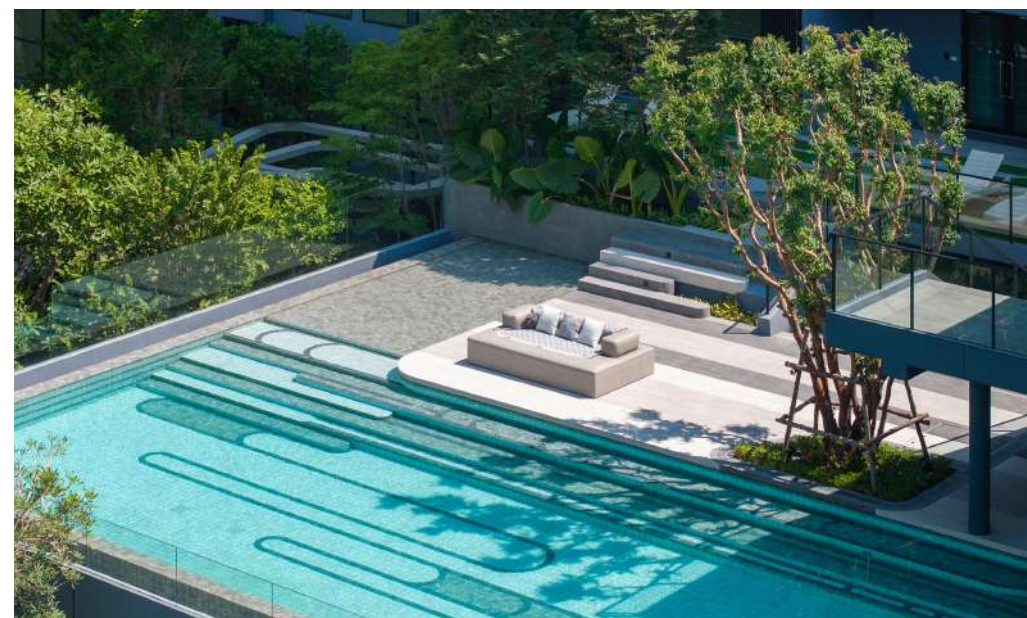
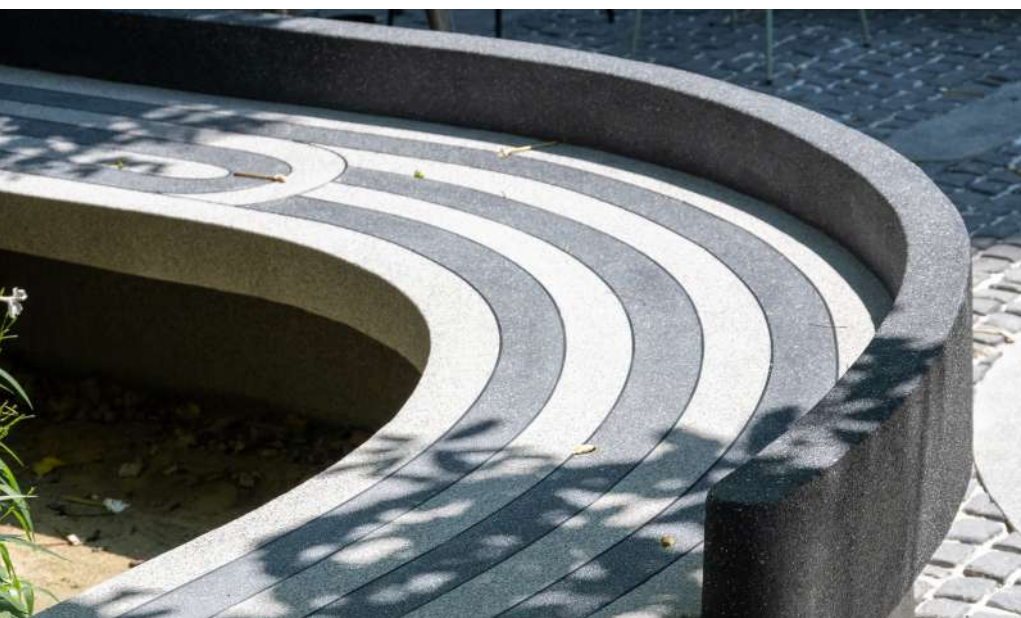
The adjective “unique” captures the essence of personality and resonates strongly with our architectural concept. Just as fingerprints define personal identity, our project aims to create an environment where every element contributes to a distinct atmosphere.

From co-working spaces to serene gardens, winding pathways, and swimming pools, the design language is interwoven with the motif of fingerprint uniqueness. Each venue is carefully crafted to reflect a sense of exclusivity, ensuring that residents experience a harmonious blend of functionality and aesthetic appeal.

The design seamlessly integrates indoor and outdoor spaces. Eliminating the distinction between architecture and nature. The communal spaces are surrounded by botanical life, giving residents inspiring views and a relaxing ambience.

Pathways weave through the landscape, inviting exploration and fostering connections. The shallow and swimming pools are strategically placed to create serene retreats, creating relaxation and leisure but also successfully preserving the design and concept of fingerprints.

In essence, this project represents the beauty of uniqueness and the significance of community. We hope to alter the architectural landscape by building an environment that cares for both humans and wildlife, generating a lively, inclusive atmosphere in which individuality is acknowledged and nature is appreciated. Through this revolutionary design, we invite people to have a life as unique as their fingerprints—an extraordinary blend of nature, community, and individuality.



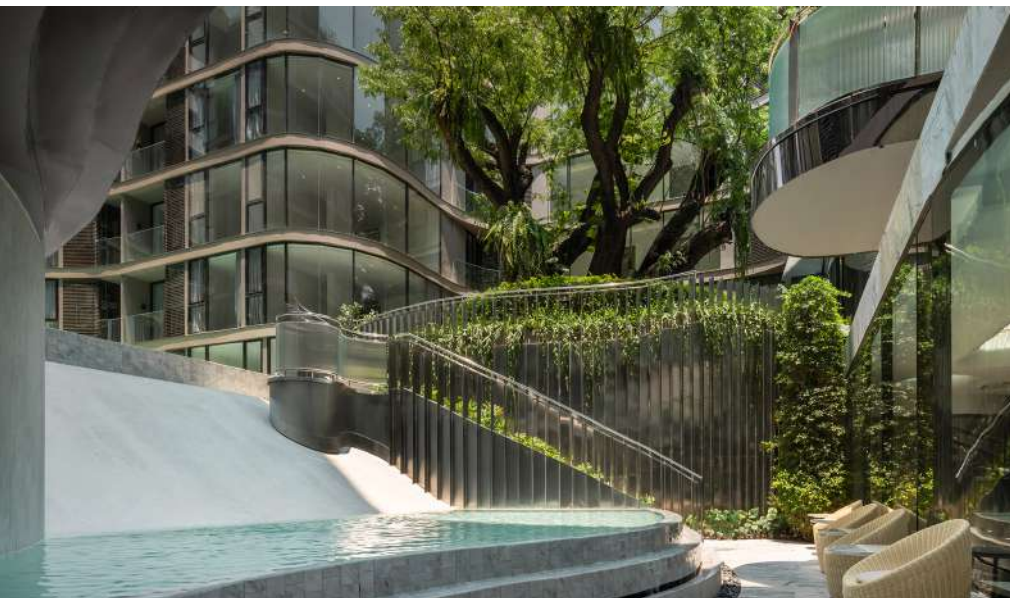
Lead Designer :
Vongvasu Chalouisap

Landscape Architect :
VVdesine Landscape Architecture
Company Limited

Client/Owner :
Premium Place Group Company Limited

Photography Credit :
Rungkit Charoenwat





FYNN ASOKE

Bangkok, Thailand

TROP: TERRAINS + OPEN SPACE

The “FYNN ASOKE” project on Sukhumvit 10 exemplifies a seamless integration of functionality and aesthetics. Located near Benjakitti Park, the project focuses on prioritizing environmental preservation and recreate green space for Sukhumvit 10 which meticulous design and efficient space use.

A key feature is the preservation of a historic 60-year-old Rain Tree (*Samanea saman*), which is encircled by an earth-retaining wall to maintain its existing level. This design provides a tranquil space for activities around the tree, with pathways extending from the wall to protect the roots. Additionally, a staircase integrates with the retaining wall, leading to a children’s pool and basement facilities.



The access experience is carefully curated. The perimeter wall uses small marble pieces that blend with the building's design and openings, including pedestrian access and a security guardhouse. Decorative perforated light boxes and an entrance gate with a pattern inspired by the Rain Tree's leaf enhance visual appeal and connection to the preserved tree.

The drop-off area features a stainless-steel surface level with the road, ensuring smooth vehicle movement. The lobby connection utilizes frosted glass railings to reduce glare from headlights on the internal pool area. Water features are designed around a "Three-Stories Water Surface" concept, incorporating multiple levels for added depth. A sky light above the drop-off area illuminates the fitness center below, creating

a calming atmosphere. The main pool area links the two buildings with a view deck along the walkway, featuring a waterfall wall and slide for enjoyment, and a water tunnel connecting to a children's pool in front of the fitness center.

The rooftop garden connects activity zones between the buildings with a green buffer for privacy. It includes areas for kids' play, BBQ, sunken seating, lawn, and vegetable planting. Select openings offer views of Benjakitti Park and the connecting bridge.

Overall, "FYNN ASOKE" combines aesthetic appeal with a commitment to environmental preservation and high-quality materials, addressing user needs for comfort and beauty while integrating modern tech and design principles for optimal outcomes in landscape architecture.

Lead Designer :
Pok Kobkongsanti

Landscape Designer :
Thongchai Sinsansiri
Peerasit Saengwanloy
Khanapol Suvarnasuddhi
Chanikarn Phitphisarn
Nuttaporn Wattanajaroenpoka
Pakkapong Dechjirakul

Construction Drawing Team :
Kampon Prakobsajakul
Pranom Khunlao
Ibrohem Wangji

Horticulturalist :
Piyakarn Kleebthong

Client/Owner :
FYNN Development Co., Ltd.

Prime Contractor :
JWS Construction Co., Ltd.
JATA CONSTRUCTION LIMITED
PARTNERSHIP

Architect :
ATOM design Co., Ltd.

Interior Architect :
Anonym Co., Ltd.

Structure :
Civilpark International Co., Ltd.

M&E :
Geo Design @ Engineering Consultant

Signage :
Workwinsign media Co., Ltd.



SCOPE PROMSRI

Bangkok, Thailand

SHMA COMPANY LIMITED

Living amid high-rise buildings and a big city always makes us feel disconnected from nature and yearn for more green spaces. Scope Promsri is a premium low-rise condominium development in every aspect such as design, and location, from its design and location to its simple yet luxurious interior decor, following the concept of “International Premium” to meet the needs of urban dwellers.

The landscape design of this project is unique and tailored to reflect the identity of its residents. It draws inspiration from the atmosphere of Cenotes, famous natural tourist attractions in Mexico popular among travelers worldwide to be a part of this project to provide residents with daily opportunities to relax and immerse themselves in nature through various parts of the project.

Cenotes are natural water filled sinkholes formed by the dissolution of rock, often with numerous stalagmites and stalactites, and underwater caves beneath them. Shma brings the characteristics of Cenote Dos Ojos, one of the most popular Cenotes that people often visit which is a natural sinkhole with crystal-clear water inside a cave. It is open to the sky, allowing sunlight to filter through, and it is surrounded by lush vegetation from the deep forest. There are large stalactites that demonstrate their age and the richness of the environment.

The entrance of the Scope Promsri project provides experiences of the lushness of natural vegetation that surrounds you with the shade of large trees also creating a feeling of walking through a natural tunnel which serves as a transition space for gradually getting into the relaxed area located in the center of the project.

The Cenotes Court is designed under the concept of 'Monolithic Jungle,' which provides a tranquil retreat. Stone walls and a greenish emerald pool are covered with natural foliage. The pool is designed for various features such as a lap pool, Jacuzzi seat, bubble jet, feature waterfall, and outdoor shower to accommodate the residents' lifestyles. Surrounded by nature, there are open areas that welcome natural light and breezes, offering a view of the sky against the emerald water which resembles the atmosphere of Cenote Dos Ojos. This creates a relaxing atmosphere in nature, providing a private and fulfilling living experience for residents to unwind at any time.

Lead Designer :
Namchai Saensupha

Landscape Architect :
Tarntip Tantprasert
Sunpetch Sroisoan
Chaiyot Kiewkaew

Client/Owner :
Scope Co., Ltd.

Prime Contractor :
Pornpranakorn Co., Ltd.

Photography Credit :
Nawin Deangnul

Architect :
CREATIVE CREWS

Interior :
BE GRAY Co., Ltd.

Horticulturist :
Pornpun Chairat

Construction Manager :
Patcharaporn Chareonporn

M&E :
NVI ONE Co., Ltd.

Graphic Designer :
Chidapa Phrueththananon





BUGAAN RAMA 9 - MENGJAI

Bangkok, Thailand

TK STUDIO CO., LTD.

BuGaan Rama 9 is an exclusive housing project located in the high-density residential area of Mengjai, Bangkok, featuring eight luxurious units on a 5,900 m² plot. The project presents a unique design challenge: to create a luxurious living environment within a compact space. To achieve this, the project is developed under the concept of “Modern Organic,” which blends contemporary living with natural elements in a harmonious and innovative way. This concept is evident in both architectural and landscape design, emphasizing simplicity, clarity, and the use of durable natural materials.

The Modern Organic philosophy integrates modern living with organic forms found in nature. The architectural style is clean and straightforward, utilizing materials like stone, wood, and steel to create an elegant yet bold appearance. The design aims to provide residents with a private, serene, and aesthetically pleasing environment.



Main gate features a simple, vertical design made from natural materials, evoking the image of tree trunks and guiding visitors into the project. This entrance establishes a bold yet elegant tone for the luxurious experience within the project. The security gate and guard house maintain a similar aesthetic, using steel patterns reminiscent of tree trunks and branches to reinforce the organic theme while enhancing security.

At the heart of the project lies the central garden, designed to provide both aesthetic & functional leisure space. An Infinity Sculpture made from brass serves as a focal point, symbolizing everlasting happiness and embodying the project's commitment to fulfilling residential experience. The housing units are arranged around this garden, ensuring that each unit has a private view and easy access to this green space.

To maximize the limited space, the garden features a diverse selection of trees, shrubs, and groundcovers, creating a lush environment that offers shade and enhances visual appeal.

Privacy is prioritized through the strategic placement of plants, ensuring distinct views while screening units from one another. An walkway with a curvilinear design enhances the walking experience, creating a sense of spaciousness. Resting and seating areas along the pathway provide spaces for relaxation and social interaction, reinforcing the garden's role as a communal yet intimate environment.

BuGaan Rama 9 successfully balances luxury and functionality through its design concept. By integrating natural elements with modern design and focusing on resident privacy and comfort, the project stands out in the dense residential landscape of Bangkok, offering a high-quality living environment that promotes well-being and connection with nature.



Lead Designer :
Tawatchai Kobkaikit

Landscape Architect :
Jeerawat Siriwetech
Patipan Potiyaraj

Client/Owner :
SANSIRI PLC

Prime and Softscape Contractor :
Green Space

Photography Credit :
Rungkit Charoenwat

Architect :
makeAscene



HONOR
AWARD



GENERAL DESIGN : Residential Complex | HONOR AWARD

NARASIRI PHAHOL WATCHARAPOL

Bangkok, Thailand

TK STUDIO CO., LTD.

Narasiri Phahol-Watcharapol is a high-end residential development in northern Bangkok, covering about 121,000 square meters with 125 luxury units. It is conveniently located near the expressway and aims to provide an elegant living environment for discerning residents. The housing units are arranged around a 10,480-square-meter L-shaped common green area, enhancing the luxury experience. The landscape design takes inspiration from the renaissance palace of Versailles, showcasing the elegance and grandeur of French architecture and gardens. This classical aesthetic is seamlessly integrated with modern living style, resulting in a unique and sophisticated residential atmosphere. To address the challenges posed by the L-shaped land, the project divides this space into three zones: semi-public, semi-private, and private. Various landscape features connect these zones through overlapping areas, including a mini clubhouse, the welcome lake, the grand clubhouse, and the formal garden. This layout ensures that the grand clubhouse serves as a focal point is located at the intersection of two perpendicular axes, providing stunning views of both the welcome lake and the formal garden, while the mini clubhouse maintains a sense of separation.



Lead Designer :
Tawatchai Kobkaikit

Landscape Designer :
Watcharapol Woradirek
Patinya Boonmee
Wanwarin Rodbutr

Client/Owner :
SANSIRI PLC

Photography Credit :
Rungkit Charoenwat

Architect :
AT FORTY CO., LTD.

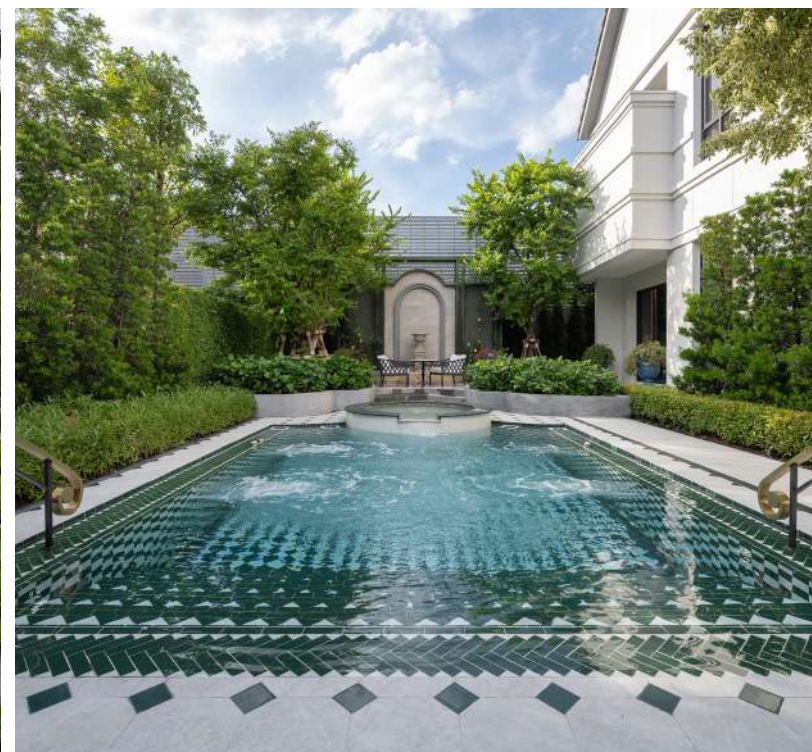
Interior Designer :
That's Its

Structural and Civil Engineer :
SANSIRI PUBLIC CO., LTD

MEP engineer :
SANSIRI PUBLIC CO., LTD

Hardscape Contractor :
Koranit Construction

Softscape contractor :
Green Space



Entering through the main gate, visitors are greeted by a striking stainless steel winged lion sculpture set in a roundabout, representing interpretation of classical with modern imagery. The grand entrance, characterized by a French arched roof and ornate details, creates an impressive welcome to the development.

The mini clubhouse is situated next to the main gate, to the north of the welcome lake, allowing residents to host guests with stunning views of the lake's grand fountain and embodying the project's luxurious and serene essence. The welcome lake also serves practical purposes, acting as a reservoir for runoff, providing flood protection, and balancing the project's cut-and-fill requirements. A curvilinear pathway along the lake's edge allows residents to enjoy strolling amidst picturesque scenery.

Amenities such as a viewing deck, seating areas, flowering plants, and an amphitheater enhance the lake's functionality and aesthetic appeal.

The adjacent grand clubhouse boasts an infinity-edge swimming pool that offers breathtaking views to the lake. The classical garden is a 120-meter-long rectangular space that captures the grandeur of classical garden. It includes elements like fountains, lamps, large potted plants, and parterre, creating a visual focal point for nearby homes. Recreational facilities such as a putting green, playground, and the centerpiece Le Pavilion, featuring delicate wrought iron patterns, further enhance the area's luxurious appeal, making Narasiri Phahol-Watcharapol a refined living destination.



HONOR
AWARD



THE BASE CENTRAL PHUKET

Phuket, Thailand

LANDSCAPE COLLABORATION CO., LTD. (LCO)

Phuket is one of the most cultural provinces in Thailand, “Peranakan” is an ethnic group which mixes between 2 subcultures of Chinese immigrant and muslim. The main idea of this project is to create home that remind of Peranakan culture, art and craft, and lifestyle. The concept of the main space is bringing terrain of Phuket and put it in the center of endclose inner courtyard of 3 buildings. Not only make a large-scale of planting area but also hide parking space located under each building for more privacy of the swimming pool and pool access room type in the first floor.



Landscape area in this project mainly focus on inner court between the building which leave landscape area such a unique form of trapezoid which we separate in 2 special space. On the right one is a large scale of lawn which provided tenant to gathering due to special holidays. and on the left side where swimming pool is located. the room that connect to the swimming pool also have there own balcony which can access to the pool itself which is very rare in nowadays condominium. the swimming pool include shallow pool, kid's pool, jacuzzi and there also linked to the public area that have a little sunken seats sunk in to the pool. the 2nd floor pool also have the same

facility as the main pool which provide the 2nd floor rooms can use as a pool access from there own rooms. how ever each pool can be connect to each other by using public area walkway and stair that interpenetrate into landscape. by the side of the main pool where a large berm is sitting which help protecting privacy of swimming pool from parking lots in the first floor of each building which we using 1:3 ration to protect the soil from collapsing therefore almost 2 meters high of landscape berm was created to keep each area privacy and greenery atmosphere. The planting that we used in this project mostly is a tropical plants which can be found locally in phuket.

Lead Designer :
Boontarika Wannapin

Landscape Architect :
Kraiwin Surechainirun

Architectural Design :
Quatre Architect

Interior Design :
Zoulliving Co., Ltd.

Client/Owner :
Sansiri Public Company Limited

Prime and Softscape Contractor :
19th Landscape Co., Ltd.

Photography Credit :
Rungkit Charoenwat



HONOR
AWARD



LA HABANA CONDOMINIUM

Prachuap Khiri Khan, Thailand

LANDSCAPE COLLABORATION CO., LTD. (LCO)

La Habana, a new resort-like condominium is only 250 m. from the beach and nearby weekend night market, Cicada and Tamarind. Inspired by “Eclectic design” La Habana landscape design has embraced and combined Classic Spanish colonial architecture and Vibrant Havana city of Cuba into its softscape plantation and hardscape design. The unique identity makes this landscape and architecture to become a “remarkable” Huahin low-rise condominium. Its design concept demonstrates a colorful Havana city atmosphere by the overall European façade elements with colorful tinted. This resort-like condominium starts by breaking the building mass for the sake of ventilation, sunlight, comfy space, and a variety of active courtyards. The main design idea & concept focuses on “The Tropical Caribbean with an Archipelago design”. The landscape design team has reinvented new landscape interpretations melted into space and architecture. Inspired by the seaside community on the Caribbean island, The design has adopted a variety of nature, culture, music, food, and lifestyle.



GENERAL DESIGN : Residential Complex | HONOR AWARD



The details laid in all hardscape components and outdoor pieces are clearly expressed through colorful and vibrant tropical colors with a fun happy life with a touch of nostalgia and vintage. Hardscape, Softscape has explored and adopted Caribbean gardens such as palm trees and hibiscus flowers, celebrating biological diversity and patterns in plants, and animal sculptures installed throughout outdoor landscape areas. These elements include the hibiscus flower on the pool and the main entrance palm court patterns. With palm pattern shade and shadow in the garden and space, pleasant ambiance and joyful moments are everywhere through the island pool, infinity pool, and water slider. This project has provided two main pool areas, the 800 sqm. freeform island pool on the ground serving as a major water playground and the 200 sqm. cliff pool on the 2nd floor serving as the parking lot's visual blockage. It also acts as a connection point where residents

can use pool access from their balconies. The pool pattern was handed-craft by using small mosaic tiles organize in floral graphic to immitate La Habana vibe and for the color we use cray like color to represent tropical landscape of Habana. The main landscape and pool space are reflected by the Archipelago layout. The spaces consist of an elevated berm forest garden, island garden, and sunken space throughout the major pool. Water movements create playful and fun activities. It has become a water playground with fun spaces such as a water slider, water jet, jacuzzi pavilion, and a secret island garden with a floating hammock. The grand waterfall also visually connects and soundly links the 2nd-floor pool with the ground-floor pool. The Building C sub Entrance courtyard with a water fountain is inspired by Havana's chic bar and secret café. The fitness rooftop has a backyard garden including the herb and edible plants.



Lead Designer :
Boontarika Wannapin

Landscape Architect :
Nutchar Rungcharoenluk
Chalisa Atipanya

Client/Owner :
Sansiri Public Company Limited

Prime Contractor :
Green space

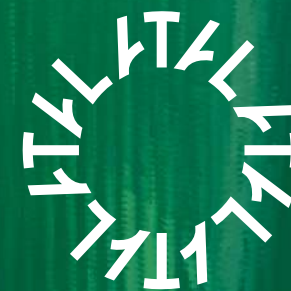
Photography Credit :
Rungkit Charoenwat

Architectural Design :
Openbox Architects

Interior Design :
Paradigm Shift Design

Structural Engineer :
InfraTechnology Services Company

Mechanical Engineer and Electrical :
Palmer & Turner (Thailand)



AWARD
CATEGORY
02

GENERAL DESIGN

**COMMERCIAL
SPACE**
(GD-CS)

Landscape planning and design for a commercial project such as a department store, a shopping mall, a market, a theme park, a water park, a sale office, etc.



AWARD OF EXCELLENCE



GENERAL DESIGN : Commercial Space | AWARD OF EXCELLENCE

WHIZDOM IOI PHASE I

Bangkok, Thailand

LOKOH=CO., LTD.

The project is a commercial development designed with semi-outdoor and indoor spaces. The design features access points that create the impression of a hidden garden within the building, aimed at providing a new experience for users. It incorporates natural light and ventilation, establishing continuity from the skywalk connected to the nearby BTS station.

The interior space is designed to offer a walking and viewing experience wandering into a valley, with green areas arranged at varying elevations. Some pathways are gently sloped, resembling an uphill walk, and users pass beneath the building as if traversing through a cave, eventually emerging into another area that opens up to a hidden space. The landscape design emphasizes topographical features, reducing the boundary between architectural elements and landscaping to create a cohesive environment.

The selection of plant species considers their light exposure, combining both shade-tolerant and sun-loving plants, focusing on trees that are not overly prominent to ensure the garden appears ordinary and natural.



The interior space is designed to offer a walking and viewing experience wandering into a valley, with green areas arranged at varying elevations. Some pathways are gently sloped, resembling an uphill walk, and users pass beneath the building as if traversing through a cave, eventually emerging into another area that opens up to a hidden space. The landscape design emphasizes topographical

features, reducing the boundary between architectural elements and landscaping to create a cohesive environment.

The selection of plant species considers their light exposure, combining both shade-tolerant and sun-loving plants, focusing on trees that are not overly prominent to ensure the garden appears ordinary and natural.

Landscape Architect :
 Danaiwit Yukhong
 Athaporn Pouyox
 Tinnaphop Chawatit
 Akkranit Siripanich

Client/Owner :
 MQDC - Magnolia Quality Development



S-OASIS

Bangkok, Thailand

TROP: TERRAINS + OPEN SPACE

S-Oasis is an office building strategically positioned in between Vibhavadi-Rangsit Road and Chatuchak Park. The design concept, “Green Straw” functions as a green bridge linking the urban environment of Vibhavadi with the park’s natural greenery. The building serves as a connector, offering office workers, residents, and the community access to nature, while reflecting the hidden green oasis behind it.

The ground floor landscape design features a linear layout that reconnects the community with Chatuchak Park. It includes a shaded walkway with trees, enhancing interaction among office workers, neighboring buildings, and residents. This space integrates elements of flexibility, interactivity, technology, ecology, and art, promoting a harmonious relationship between people and nature. The tree canopy provides shade, improving comfort and reducing heat. On the western side of the building, adjacent to Sun Plaza community mall and food center, there is a relaxation area with tree-shaded seating.

Though the full implementation of porous blocks for heat reduction was constrained by construction limitations, these blocks are still featured in the environmental impact assessment (EIA).

The seating area is surrounded by a variety of trees and shrubs, including *Cananga odorata*, *Ficus lyrata*, and *Barleria lupulina*, which not only provide shade but also contribute to a pleasant atmosphere with their natural fragrances. This space supports biodiversity, offering a peaceful retreat for people and wildlife in the urban setting. The rooftop, transformed into a garden, includes meeting rooms and collaborative green spaces.

Lead Designer :

Pok Kobkongsanti

Landscape Architect :

Nawinda Rungsmi, Yanisa Songserm
Viewthong, Look nam, Tito

Construction Drawing :

Chatchawan Banjongsi

Horticulturalist :

Piyakan Kleebthong

Client/Owner :

SINGHA ESTATE PCL.

Prime Contractor :

SMC, STAR PLANT LANDSCAPE CO., LTD.

Photography Credit :

W Workspace Company Limited

Architectural Design :

M.A.A.R. Co., Ltd.
Tange Associates Asia Pte Ltd.

Interior Architect :

Architectkidd Co., Ltd.

Lighting Design :

BO STEIBER LIGHTING DESIGN Co., Ltd.

Structural Engineer :

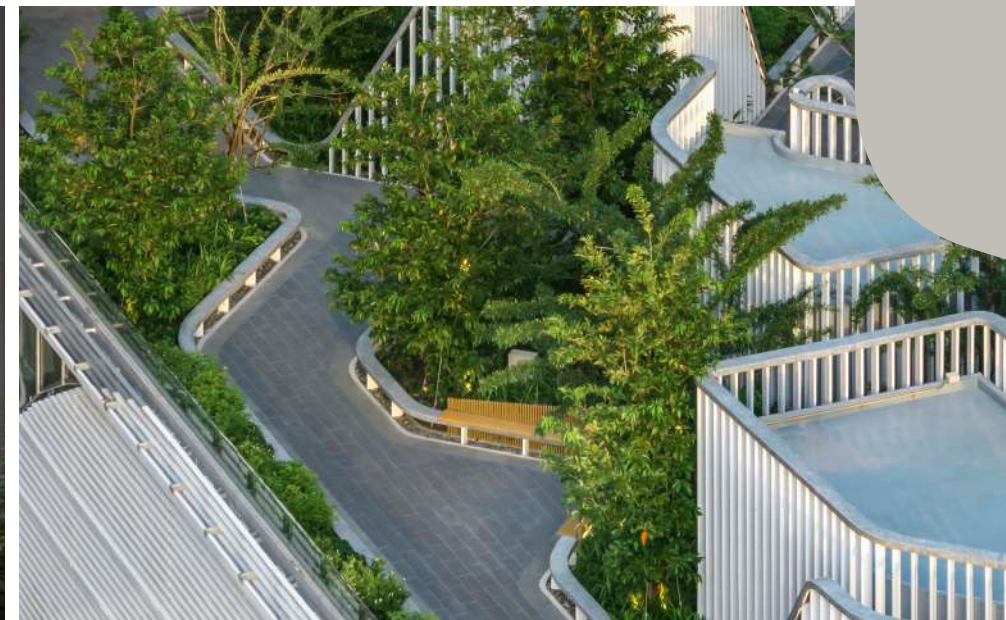
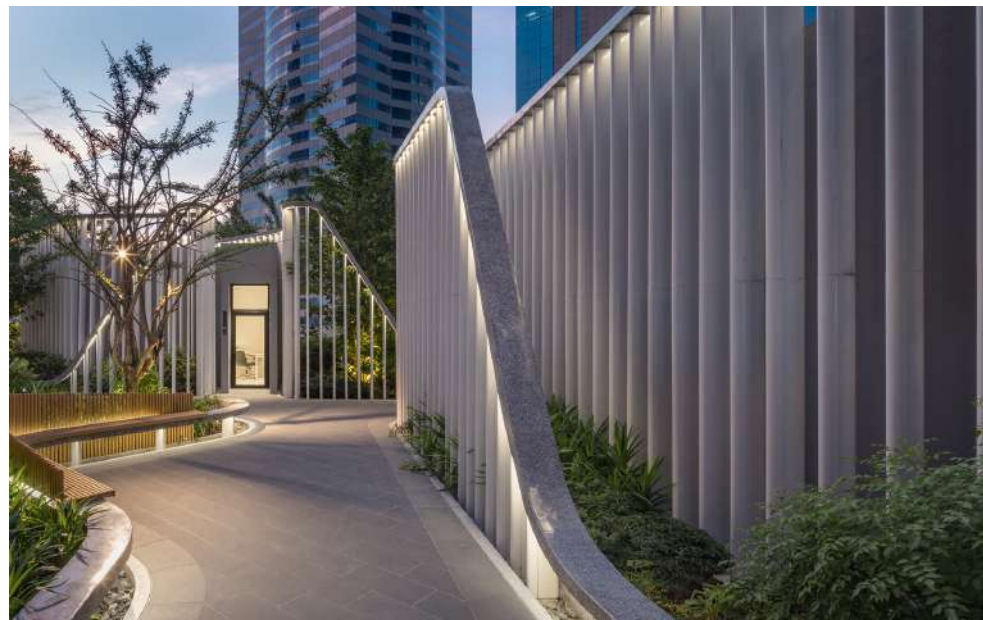
MEINHARDT (THAILAND) COMPANY LIMITED

Mechanical Engineer and Electrical :

M&E: MITR TECHNICAL CONSULTANT CO., LTD.

Architectural fins extend from the building's facade into the garden, offering seating areas for relaxation and fresh air. Tall, sparse trees like *Alstonia scholaris* are chosen for safety and aesthetics, while the aroma of *Fagraea fragrans* adds to the calming environment. The rooftop also features a mix of shrubs and flowering plants, including *Gardenia tubifera* and *Barleria lupulina*, which attract birds and insects, enriching the garden's ecosystem.

All materials and plants comply with LEED green building standards. Paving materials are selected for solar reflectance to minimize heat, and plants are chosen for their low to moderate water needs, ensuring long-term environmental sustainability and friendliness.





MARCHE THONGLOR

Bangkok, Thailand

ARCHIVE LANDSCAPE CO., LTD.

The “Marché Thonglor” community shopping center is strategically situated in one of the most dynamic districts of Bangkok, encompassing a site area of 4 rai. This facility boasts a retail space of 13,600 square meters, complemented by 3,000 square meters of outdoor green space, establishing it as the largest shopping center in the area. The center aspires to serve as a premier hangout destination, accommodating a variety of lifestyles and daily activities for modern urban residents, while offering areas for relaxation, dining, and social interaction throughout the day, including spaces that welcome pets.



Given the expansive scale of the project, which spans five levels, the primary design challenge was to cultivate an engaging and innovative visitor experience. The design integrates landscape architecture with structural elements, crafting an immersive narrative that transports visitors into a natural environment, culminating in a prominent waterfall at the apex of the center. This waterfall draws patrons upward through all levels, cascading through an open atrium as a dynamic water feature, which includes a grand waterfall from the fifth floor, a waterway, and additional waterfalls on the second floor, all converging at a central pool on the first level. This design fosters an ambiance akin to that of a natural setting, achieved through a natural filtration water system that eschews chlorine, thereby safeguarding the project's vegetation—a significant challenge in the design process.

The central area on the first floor is designated as a focal point, harmoniously integrated with preserved existing trees and surrounded by a network of walkways designed by the architects.

The design further stipulates that the perimeter areas of the building on all levels shall function as communal activity spaces, encouraging visitors to relax and engage in various activities, thereby prolonging their stay within the center.

In the development of this public shopping center, both the designers and architects have determined that all primary walkways will feature gentle slopes, thereby facilitating seamless movement throughout the facility.

The overarching landscape design is themed around a tropical rainforest, reflecting the local climate. A diverse selection of plant species has been chosen to accommodate the specific conditions of each area. For instance, indoor spaces are adorned with shade-tolerant plants that thrive in low-light environments. To ensure a sustainable and cohesive integration of landscaping with architecture, various vertical garden designs have been employed, including climbing plants, vertical planters, and fabric-based vertical gardens, in addition to a prominent green waterfall that serves as the centerpiece of the project.



Lead Designer :
Pannavit Khotavivattana

Landscape Architect :
Kittinun Sripermpun
Rachata Metasompop
Phumipat Rinkeaw

Client/Owner :
Central Pattana PCL.

Prime Contractor :
19th Landscape Co., Ltd.

Photography Credit :
Chakkraphob Sermphasit
Tinnaphop Chawatin



HONOR
AWARD



SKY FOREST SCAPE

Bangkok, Thailand

SHMA COMPANY LIMITED

Bangkok is a Primate City that has seen a significant influx of people into the capital. The city is filled with skyscrapers constructed to meet the demands of the population which cause the shortage of green spaces with only 7.87 square meters per person. These Green public spaces are typically far from residential hubs.

SKY FOREST SCAPE is a new type of public space on the rooftop in Bangkok. Serving as a POPS (Privately Owned Public Space), which is a new concept in Thailand. This project addresses the demand for public spaces among urban populations and aims to increase areas that connect with nature. In an urban context where ground-level space is increasingly limited and dense, it is essential to consider the importance of both nature and people.



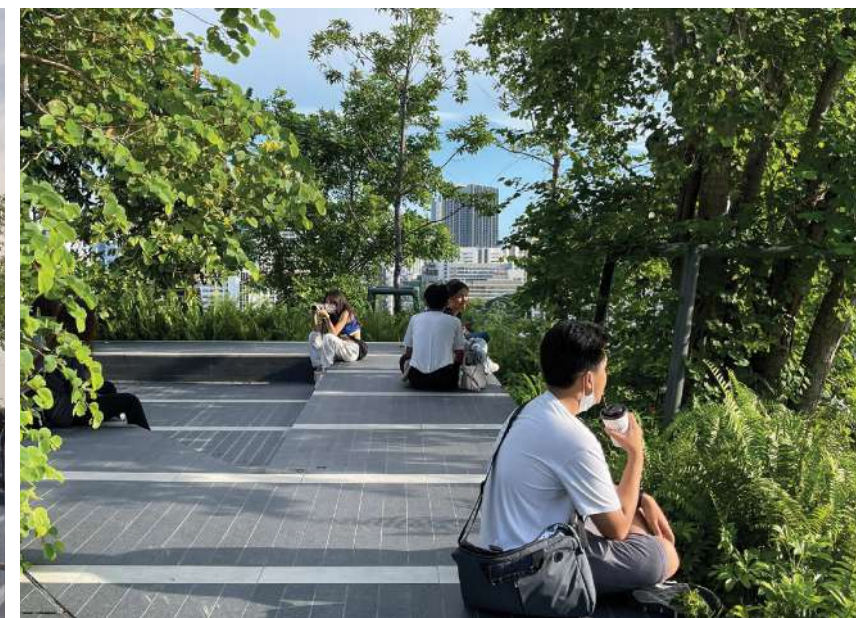
On the ground level, 'BIO STREET' connects pedestrians from the main walking street through an area of lush greenery, designed as a dry swale with porous paving to mitigate runoff water from the street. A series of elevators and escalators lead to the 10th floor, where the "SKY FOREST SCAPE" is located.

The corner of this rectangular space is lifted to form a large amphitheater and provides ample soil depth for the forest trees grove to create a micro-climate for a comfortable and cooling gathering spot. Strong linear lines from the architecture facade continue to landscape pavement to create a holistic space. It has become a new activity space in the city, offering urban dwellers a novel experience in its use, and creating a livable neighborhood.

This project becomes an opportunity for the city by having a green space in a new way that helps reduce the heat and create a comfortable and cooling microclimate by reducing the light reflection and creating a shaded environment.

Varieties of planting selection help to integrate the natural habitats with a biodiverse - ecosystem back into the city. In addition, this green space also acts as natural air filtration to absorb CO₂ and provide clean air for people.

'SKY FOREST SCAPE' is one of the most successful rooftop public spaces in Bangkok with its popularity among various crowds. This area has emerged as a new gathering place in 'Siam Square' accommodating a variety of activities throughout the day and week. SKY FOREST SCAPE demonstrates the new opportunity to create the future sky public space interconnecting the roofscape of the city.



Lead Designer :
Prapan Napawongdee

Landscape Architect :
Worawe Jamsomboon
Sarun maiprasert
Chaiyot Kiewkaew

Client/Owner :
Property Management of
Chulalongkorn University (PMCU)

Prime and Softscape Contractor :
SITE EIGHTYTHREE

Architect :
EAST ARCHITECT, IF (Integrated Field)

Photography Credit :
Phos Studio
Nawin Deangnul
Ontrack Gym

Horticulturist :
Pornpun Chairat

Construction Manager :
Anongnard Jungmongkolsawat

M&E :
SITE EIGHTYTHREE

Graphic Designer :
Warunya Rujewong



HONOR
AWARD



GENERAL DESIGN : Commercial Space | HONOR AWARD



LOTUS'S NORTH RATCHAPRUEK

Nonthaburi, Thailand

P.L. DESIGN CO., LTD.

LOTUS'S IN THE FOREST: Transforming a Hypermarket into a Community Mall through Landscape Architecture The Lotus's North Ratchapruek Lifestyle Community Mall project is located on Ratchapruek Road, near communities, schools, and other traditional shopping centers. The project's goal was to develop a design beyond a traditional hypermarket to become Lotus's first lifestyle community mall: a center of the local community and a new meeting hub for the area.

The design adopts the evolution of 'Biophilic Design' and 'Green Retail' in the retail industry. The use of natural light and good air circulation respond to values of wellness and sustainability that modern consumers appreciate. A nature-connected shopping experience not only promotes the well-being of users, but also increases the duration of use and frequency of visits, leading to sustainable business growth.

Landscape architecture is one of the important tools in this transformation, with the concept of 'LOTUS'S IN THE FOREST'.

The project emphasizes creating biodiversity in urban ecosystems. Various green spaces and ecosystems are integrated into the commercial areas, such as:

- **LOTUS'S ATRIUM** : a retail experience with a green and blue ambience; the 15 m. high open-air central courtyard of the building simulates an open forest atmosphere in the city. A fountain and indoor plants create freshness, cleaning the air and stimulating visual, auditory, tactile and olfactory senses.

- **ECO BACKYARD** : a market place in a sanctuary; a garden connecting to neighboring communities that combines a wetland preserving an original rain tree with small shops, a relaxation space, and a food-waste composter, composting food scraps from the food court.

- **HIDDEN GEMS** : a blooming garden; a rooftop above the drop-off that receives full sunlight and is suitable for growing flowers

to attract butterflies, birds, and insects, enriching urban biodiversity. Plants combined with insect-inspired sculptural seating form a miniature rooftop ecosystem, reducing heat in the building and providing a space for relaxation, learning, and stimulating the imagination.

The design considers safety and ease of access, with ramps and continuous floor levels following universal design principles for convenient use by all.

Following 'Biophilic Design' and 'Green Retail' principles, the design uses nature-inspired patterns under the shade of large trees, natural light, and good air circulation to create a nature-connected shopping experience. The promotion of user well-being makes people feel refreshed and relaxed, reducing stress, and positively impacting overall health.

The Lotus's North Ratchapruk is an example of blending nature with commercial spaces, promoting both business and sustainability.



Lead Designer :
Chanipat Chavananon

Landscape Architect :
Prapaporn Tharasaithong
Cherdchanok Treevanchai

Client/Owner :
CP Aextra Public Co., Ltd.
(Ek-Chai Distribution System Co., Ltd.)

Prime Contractor :
PALMAE Co., Ltd.

Structure Engineer :
Tantana 2003 Co., Ltd.

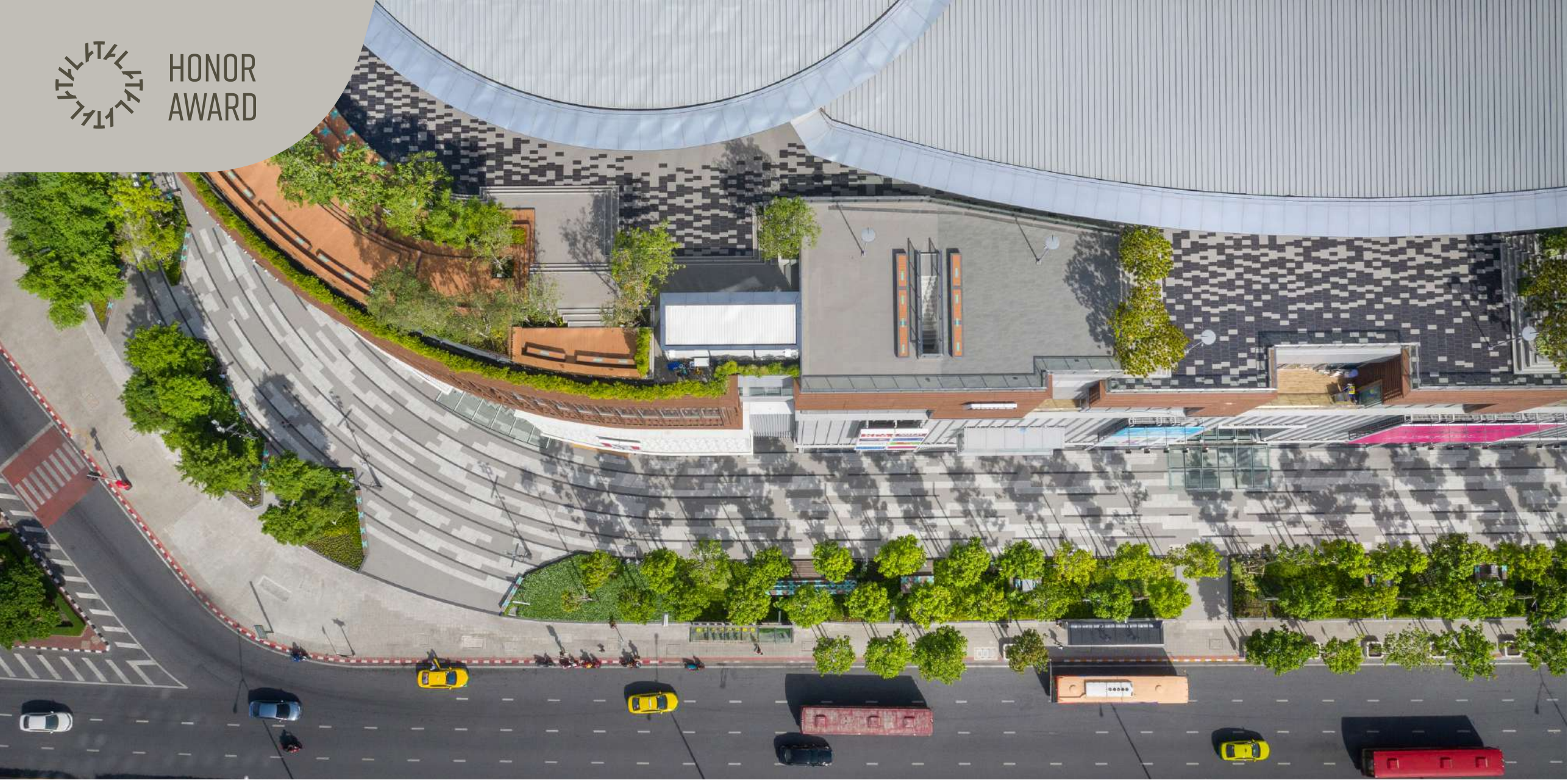
Architect :
Gensler (Thailand) Limited
Arbay Co., Ltd.

Lighting Designer :
With Light Co., Ltd.

M&E Engineer :
March Utility Co., Ltd.

Photography Credit :
Depth of Field Co., Ltd.
Dulyanut Sawaddiphap





SAMYAN MITRTOWN

Bangkok, Thailand

LANDSCAPE COLLABORATIVE CO., LTD.

The Samyan Mitrtown project is a thoughtfully designed mixed-use development that emphasizes a welcoming and accessible environment for all users. With a focus on community engagement, the project integrates public outdoor spaces that are available to everyone, fostering a sense of inclusivity and connection to the surrounding area.

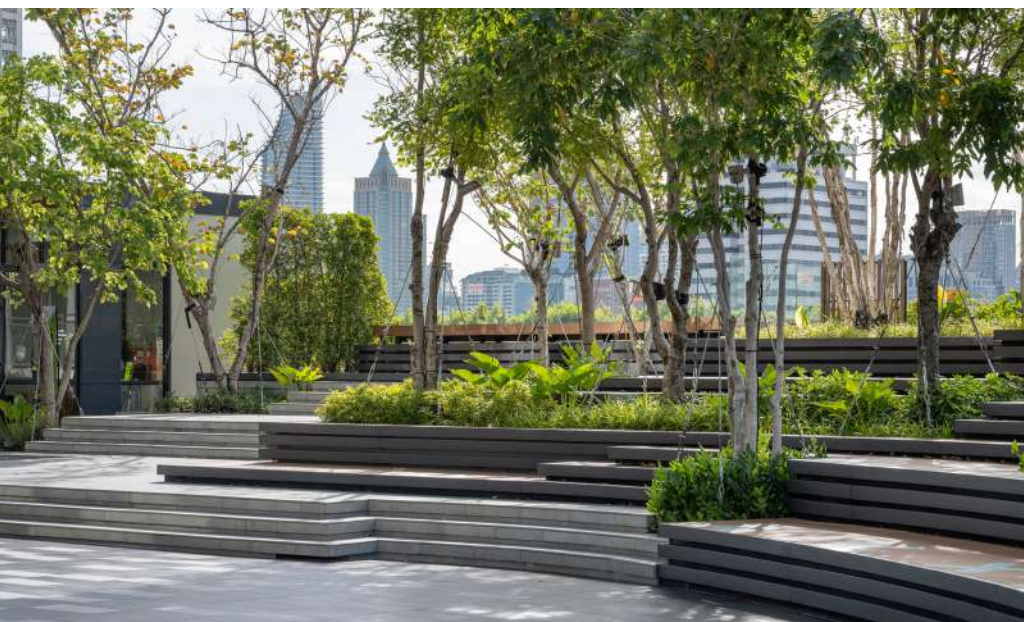
Central to the design is the front plaza, which offers a flexible space that can accommodate a variety of activities and user groups throughout the day. This adaptability ensures that the plaza can host events, gatherings, and everyday interactions, creating a vibrant atmosphere that encourages socialization and community building.



The overall design prioritizes simplicity and comfort, making it easy for users to navigate the space. Clear pathways and well-defined areas enhance the user experience, ensuring that visitors feel at ease as they explore the development. The project's layout promotes natural flow, encouraging people to engage with both the built environment and each other.

In addition to its physical attributes, Samyan Mitrtown is committed to sustainability and the well-being of its users. The incorporation of green space and thoughtful landscaping contributes to the aesthetic appeal while promoting environmental stewardship.

By focusing on accessibility, community connection, and user comfort, the Samyan Mitrtown project aims to become a vital part of the local landscape, enriching the lives of those who live and work in the area. This initiative not only enhances the immediate environment but also sets a standard for future developments, illustrating the importance of creating spaces that foster interaction and inclusivity.



Lead Designer :
Touchapon Suntrajarn

Landscape Architect :
Pitchaya Kittiwat

Architect :
Plan Associates Co., Ltd.
Urban Architects Co., Ltd.

Client/Owner :
Frasers Property (Thailand) Public Co., Ltd.

Prime Contractor :
Nineteenth Landscape Co., Ltd.

Photography Credit :
Rungkit Charoenwat



SIAM PREMIUM OUTLETS BANGKOK

Samut Prakarn, Thailand

LANDSCAPE COLLABORATIVE CO., LTD.

The Siam Premium Outlet's Landscape design was aimed at creating a new outdoor shopping mall experience while creating sustainable development within the site's contexts. The site is located on the eastern floodplain of Bangkok, near Suvarnabhumi International Airport. The Surrounding of the site was generally low-level and full of swamps and existing local fish ponds. The landscape architect approached the project by considering the site as a metaphor for a "Wetland" in a way that ensures that the landscape will function with various conditions of water on site.

In the Master Plan level, the landscape has the function of absorbing the amount of rainfall, terrain was created as a pocket to absorb as much water while creating the wetland landscape. The overall landscape was treated as a wetland for its ability to retain the water.

This approach helps reduce the amount of transformation on-site and makes the development more sustainable. In between the Commercial building, the promenade is the main artery of the shopping experience. The landscape was designed to make the comfort of shoppers wandering through the promenade pleasant.

The microclimate is the main criterion in design and maximizes greenspace creating enough shade. The orientation of the promenade was laid for better ventilation. The water feature was there to create a cooling effect as well as a good wandering experience. The promenade was articulated with a series of main open spaces; the main plaza for Event activities and a series of sunken courts provided the amenities and green space for users including the Amphitheater courtyard for leisure activity and the sunken playground to support various types of users. The concept of navigation and orientation was carefully guided by the color-coded material selection and softscape design as well as sculpture and art installation. The subtle change of color scheme creates a variation of design throughout the promenade, yet keeps the continuous singular design language.

Lead Designer :

Touchapon Suntrajarn

Landscape Architect :

Nopnara Katekaewmaneeratana
Thanat Sukonthabut

Client/Owner :

Siam Piwat Simon Co., Ltd.

Prime Contractor :

Cordia Company Limited

Photography Credit :

Rungkit Charoenwat

Managing Architect :

AO

Design Architect :

Grimshaw Architects

Local Architect :

Urban Architects Co., Ltd.

Canopy Design :

Dong Sculpture & Sang Thong Canvas Awning

Artist :

Korakot Aromdee





AWARD
CATEGORY
02

GENERAL DESIGN

HOSPITALITY
(GD-HO)

Landscape planning and design for a hospitality project such as a resort, a hotel, a rehabilitation center, a nursing home, etc.



AWARD OF EXCELLENCE



GENERAL DESIGN : Hospitality | AWARD OF EXCELLENCE

BANYAN TREE DONGGUAN SONGSHAN LAKE

Guangdong, China

P LANDSCAPE CO., LTD.

Banyan Tree Dongguan Songshan Lake seeks to embody a serene yet vibrant expressionism. Respect the natural texture and veins of the mountains and water bodies in the Songshan Lake area, and interpret the landscape with respect and humility towards nature. The landscape design creates a secluded and humble vacation destination that thrives on water through symbiosis with nature and dialogue with time and space.

The road leading to the drop off area of the banquet hall is themed around the Flower Road, creating a poetic atmosphere where vibrant colors of petals vividly expressed, enhancing the welcoming feel to the banquet hall.



The drop-off area of the banquet hall features a hollow landscape wall, creating a spacious ambience. A solitary banyan tree, standing strong amidst the water, not only echoes the theme of banyan trees, but also inherits the blessing of sheltering large trees in Lingnan culture.

A highlight of the design is the swimming pool, strategically positioned to capture panoramic views of the Songshan Lake. This pool extends the sensory experience of the surrounding natural beauty.

Inspired by Lingnan painting, where Western realism meets Eastern freehand artistry, the landscape integrates pond cedar,

pine, wetland flora and landscape ornaments, to express the artistic combination of East and West. Referring to the carving and decorative patterns in Lingnan architectural style, the details of decoration are reflected in bamboo weaving, bricks, tiles, and stones.

The color tone is also used in this uncolored way to enhance the coolness of Lingnan residential buildings. The combination of water features and tiles, the combination of brick carvings and hollow walls, the lines and bamboo weaving techniques in Manchurian windows are all incorporated into the paving, decoration, and lighting details of landscape design.



Landscape Architect :
P Landscape Co., Ltd.

Interior :
BLINK – Master planning and Interior

Client/Owner :
Dongguan WanHong Real Estate Development Co., Ltd.

Photography Credit :
白羽、陈葵



HONOR
AWARD



GENERAL DESIGN : Hospitality | HONOR AWARD

THE STANDARD HUA HIN

Prachuap Khiri Khan, Thailand

SHMA COMPANY LIMITED

The Standard Hua Hin, designed to create an adult/family playground involving experiences around wellness and the reinvigorating of senses in an effortless, seductive and playful green environment. Recognizing the demographics of Hua Hin, a popular and convenient get-away for Bangkok and other residents, The Standard is designated to be the new destination for an escape from the chaotic urban area.

Considering the site condition, the area was once full of trees and shrubs scattered around. Our main approach to the design is to preserve the forest and existing tree as much as possible. The intention is not to cut down trees and build buildings in other surrounding areas to preserve nature. As we follow the trees' location on the site, the buildings are designed and located according to that and in the end creating a variety of organic spaces with small buildings placing around the trees. This allows us to store up to 234 trees, as well as a plan to use local species in every layer of forest floor to restore maritime forest ecology and also the beach forest environment to the project area.

The trees' preserving process was a challenge that we had to cooperate on with specialists. There are two approaches to the conservation of the original trees in this project, namely keeping the trees in their original locations

and encircling the trees to nurse in nurseries and reusing them in new locations in the project area.

We also evaluate the trees' conditions and for those that need special care we also develop tree protections and do check-ups every month.

The project also values a lot on sharing appreciation for the design, lifestyle, food, music and art. The deliberate, paired-down mid-century feel of the property, furniture that translated from the concept of Hua-Hin nostalgia by gathering the sense of traditions, mood and atmosphere of the area with its playful slant that will offer a mix of calm and interactive activities.

The Standard Hua Hin is a place engineered to initiate fun, emotional connections between adults while being inclusive of young children, starting from the main entrance leading down towards the beach at the other end, which concluding into our main concept 'Journey of the unexpected'



Lead Designer :
Yossapon Boonsom

Landscape Architect :
Worawe Jamsomboon
Supanuch Krairavee
Thanakrit Kittianukul
Kawisara Teeratha

Client/Owner :
Sansiri

Prime Contractor :
PALMER & TUNER (THAILAND) LTD.

Photography Credit :
Panoramic Studio

Construction Manager :
Patcharaporn Chareonporn

Horticulturist :
Panita Onsaeng

Architect :
ONION COMPANY LIMITED

M&E :
PALMER & TUNER (THAILAND) LTD.

Graphic Designer :
Warunya Rujeewong



THE SALIL HOTEL RIVERSIDE BANGKOK BY THE RIVER

Bangkok, Thailand

LANDSCAPE TECTONIX LIMITED

Having disappeared into the transformative experiences, this Lifestyle Integrated Hotel is strategically designed and specifically defined as a place for a niche; it is only for ladies to be shined, to be seen and to be herself at The Salil Hotel Riverside Bangkok by the river.

Set along the legendary Chao Phraya River with a long linear land plot, this hotel orients herself to the river and welcomes the pleasant view to the internal courtyard where main pool, main open space, open lawn, garden courtyard and riverside terrace are on the landscape axis with multi-layering of greenery created by various textures of plant in different scales to create privacy and intimacy within the hotel.



Inspired by the legendary Chao Phraya River and the beauty of womanly-inspired design, architecture, interior and landscape designs seamlessly blend in as a collaborative design not only the space planning but also the architectural façade and the small delicate details throughout the site.

From the design concept received, we applied the concept caused by the River Phenomenon such as Tranquility, Sense of auditory, Sense of exploration, Reflections, etc. Introduced in design through concepts "The Journey of Water"

Its planning also defines clearly the hierarchy of space; main open space, social space and private space as well as specifically serving the market target; pool is surrounded by retail outlets and guest rooms, the flexibility of the riverside terrace, the effective circulation system, etc.

Main swimming pool as Multi-level pool features the visual continuity and physical transition from lobby (+1.20) to garden (+0.00). The small pocket pools within one large pool at different levels beautifully create the hierarchy of space with customized interactions with the pool, strategically minimizes crowds in one area and subtly defines nodes where you can see others or to be seen by others.

The vertical garden plays an important role as part of the facade design creating the seamless integration between architecture and landscape. Its scale, proportion and position unmistakably define the human scale in space surrounded by two buildings.

The Salil Hotel Riverside Bangkok therefore offers the essence of serenity yet provokes the tempo of metropolitan lifestyle.



Lead Designer :
Supasit Tepumnuasakul

Client/Owner :
The Salil Riverside Limited

Photography Credit :
Mi Metipat Prommamate

Architect :
Begraybangkok

Interior Architect :
Begraybangkok



AVANI+ LUANG PRABANG

Luang Prabang, Lao

XSITE DESIGN STUDIO CO., LTD.

Avani+ Luang Prabang is an affordable luxury hotel situated in the heart of the UNESCO World Heritage city. With 53 rooms, the hotel's design blends Luang Prabang's traditional architecture with French colonial influences. Surrounded by key landmarks like the night market and Wat Hua Xieng, Royal Palace Museum and Phousi Hill, the hotel faces the challenge of preserving the city's cultural heritage while offering a luxurious guest experience.

The challenge in design is to meet UNESCO’s requirements to keep the uniqueness of the city, which includes preserving all existing trees. At the same time, the hotel is located in a bustling tourist area and on a main route where monks collect alms every morning. This makes the design need to balance privacy in a limited space without clashing with the city’s culturally distinctive atmosphere. Additionally, it must meet the hotel management’s request for the hotel to blend seamlessly into the city upon completion, without the use of fences, to create a seamless connection with the surroundings.”

The landscape design focuses on using softscape elements to create privacy and harmony without isolating the hotel from the city. Plants of varying heights act as natural barriers, offering a subtle sense of seclusion while maintaining openness. The restrained use of plant varieties reflects simplicity, enhancing the local flora and fostering an atmosphere that is simply elegant, blending luxury with understated beauty.

At the heart of the project is the central garden and pool area, which opens to the busy streets but is carefully shielded by trees to maintain privacy. This balance of openness and seclusion is key to the design, allowing guests to enjoy the city’s vibrancy while retreating into a peaceful, private space.

Within the hotel, a central lawn and minimal use of tall shrubs maintain a spacious and airy feel, embodying a “Simply Luxury” aesthetic. The design ensures that the hotel feels open and expansive, despite its limited size, creating a relaxed & welcoming environment from the moment guests enter.

The preservation of existing trees, combined with the careful addition of new ones, respects the natural landscape while enhancing the overall sense of harmony. Every design choice is rooted in sustainability, ease of maintenance, and a deep respect for the city’s cultural context, creating a timeless, luxurious experience.



Lead Designer :
Thotthanet Luekijna

Landscape Architect :
Thotthanet Luekijna

Client/Owner :
PHOUSI HOTEL AKANE MIXED
COMPANY LIMITED

Prime and Softscape Contractor :
Thansamay Co., Ltd. (Hardscape)
Pha Tad Ke Botanical Garden
(Softscape)

Photography Credit :
Rungkit Charoenwat

Architect/Interior :
Scale 11 Architecture Co., Ltd.

Lighting Designer :
Goodlux Design Consultancy

Structural & MEP Engineer :
DCS Associates Co., Ltd.



HONOR
AWARD



GENERAL DESIGN : Hospitality | HONOR AWARD

AVANI KHAO LAK RESORT

Phang Nga, Thailand

LOKOH=CO., LTD.

Avani Khao Lak is located in Khao Lak, Thailand, on the site of the former Coco Palm Resort. After the tsunami in December 2004, almost everything was devastated, except for the ponds, coconut trees, and some large trees.



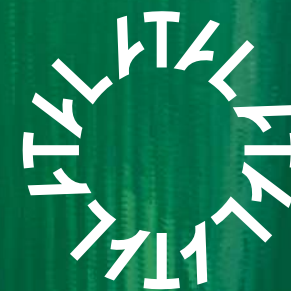
Landscape architects strive to move forward while still considering and learning from the historical origins of the profession, using these insights as a framework for the future. With the main concept of providing new experiences for users to engage with the atmosphere of coastal forests,

tropical rainforests, and natural grasslands by incorporating additional functions as appropriate, without overly disturbing the natural environment. Furthermore, the potential of the area is primarily used as the basis for decisions regarding the design and positioning of various buildings.

Landscape Architect :
 Danaiwit Yukhong
 Wiphada Kasetpibal
 Phatthraphorn Wasinamaykhin

Client/Owner :
 Avani+ Khao Lak

Photography credit :
 Danaiwit Yukhong



AWARD
CATEGORY

02

GENERAL DESIGN

**INSTITUTION
CAMPUS
(GD-IC)**

Landscape planning and design for institutions or organizations such as a headquarter complex, an education related facility/campus, a research center, a public or private institute, a museum, etc.



AWARD OF
EXCELLENCE



DTGO CAMPUS

Samut Prakarn, Thailand

TK STUDIO CO., LTD.

DTGO Campus is the headquarters project of DTGO Corporation Limited, comprising several subsidiary companies, including the real estate company MQDC. It is situated on a 15-rai plot near the Forestier project in Samut Prakan Province. The project is divided into six sections: a research and knowledge creation center, offices, recreation and sports areas, facilities for religious activities, green spaces, and parking.

Its goal is to create an environment akin to a large family camp where members live together happily amidst green spaces that foster a relaxing work atmosphere, encouraging creativity and building a warm, friendly, and supportive work community.

To support the needs of the project, the landscape design concept “Immersive with Nature” has been implemented, emphasizing nature as a central element of the work environment. The presence of nature can be felt through sight and interaction everywhere.



A large green space is extended from the front to the back of the project, flanking the main pathway. Although the area flows continuously, it has different atmospheres. A large forested area runs parallel to the front building, alongside a multipurpose lawn and the medical building. This green space connects to a courtyard surrounded by the back buildings.

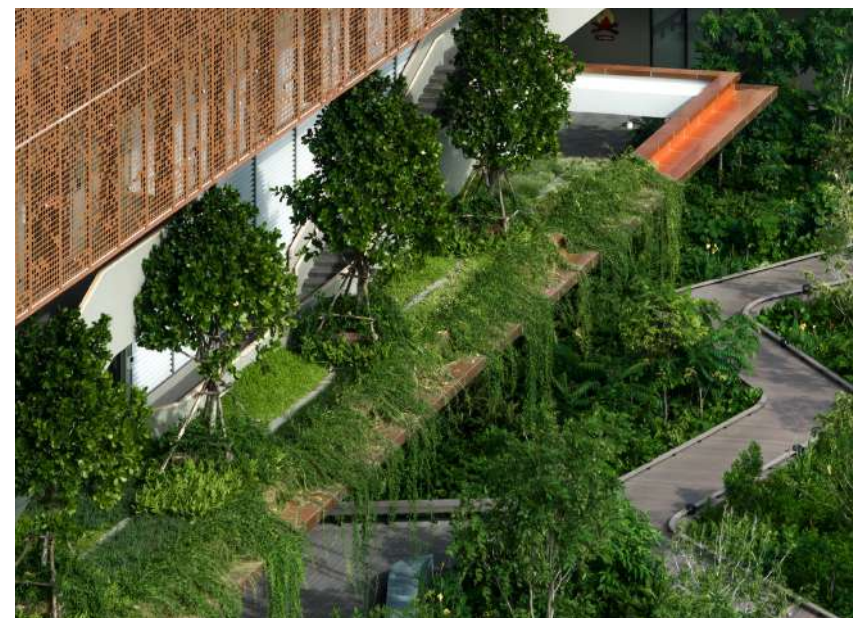
From this courtyard, there is convenient access to recreational areas and sports fields, as well as spaces for religious activities.

The forested area in the front office aims to convey the organization's commitment to nature, allowing employees and visitors to witness the growth and change of the planted forest alongside the organization and employees' sustainable and stable development. The ground level has been lowered, and the pathways in the forested area elevated, providing

wildlife with a sense of freedom and minimizing human disturbance. These elevated paths connect to the central area on the third floor of the building, leading to the back building with a more private courtyard that includes walking paths, a koi pond, relaxation areas, dining spaces, and collaborative workspaces.

The recreational and sports area connects with the building and the main green spaces. Beside a football field, there are jogging paths, viewing areas, and spaces for religious activities, including a meditation garden, a pavilion, and a meditation path surrounded by forest to create tranquility and privacy.

DTGO Campus thus serves as a camp that integrates work with relaxation and nature, fostering freedom of thought and the choice of how and where to work, akin to working in one's own retreat.



Lead Designer :
Tawatchai Kobkaikit

Landscape Architect :
Tusanee Khunchuay
Naowarat Viwatborvornwong
Chattip Aphibanpoonpon

Client/Owner :
Magnolia Quality Development
Corporation Limited

Prime and Softscape Contractor :
CPS

Photography Credit :
Wisorn Tungthunya

Architect and Interior Designer :
DT Design Corporation Limited

Structural and Civil Engineer :
Infra Group Company Limited

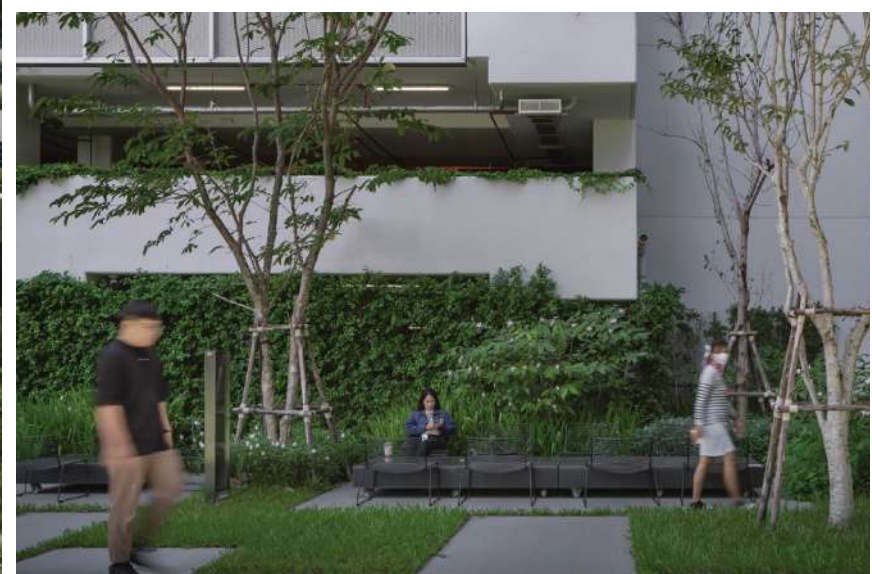
MEP Engineer :
EEC Group Co., Ltd.

Hardscape Contractor :
TEKO CONSTRUCTION

Quantity Surveyor :
COST PLAN

Sustainability Consultant :
Research & Innovation for Sustainability
Center (RISC) Magnolia Quality
Development Corporation Limited





AIA EAST GATEWAY

Bangkok, Thailand

SHMA COMPANY LIMITED

AIA East Gateway is a new office building model located in the Bangna area. This building emphasizes the well-being of office employees by integrating nature and green spaces into the building.

People Wellbeing

As an extension to working life within the building, the surrounding landscape on the ground, on podiums, and sky balcony offer a relaxing atmosphere for people and provide areas to promote physical and mental well-being; such as an outdoor exercise area featuring a vibrant red running track contrasted with greenery along 400 meters. Employees can change the atmosphere for working. The outdoor Co-Working Area is surrounded by nature. It can help to increase concentration, reduce fatigue, and enhance work efficiency, and creativity by approximately 15-20%. There are areas to promote Social and Community well-being for employees, with meeting pavilions, resting pavilions, etc, and edible garden. Studies have found that having an edible garden can improve people’s health by up to 15%.

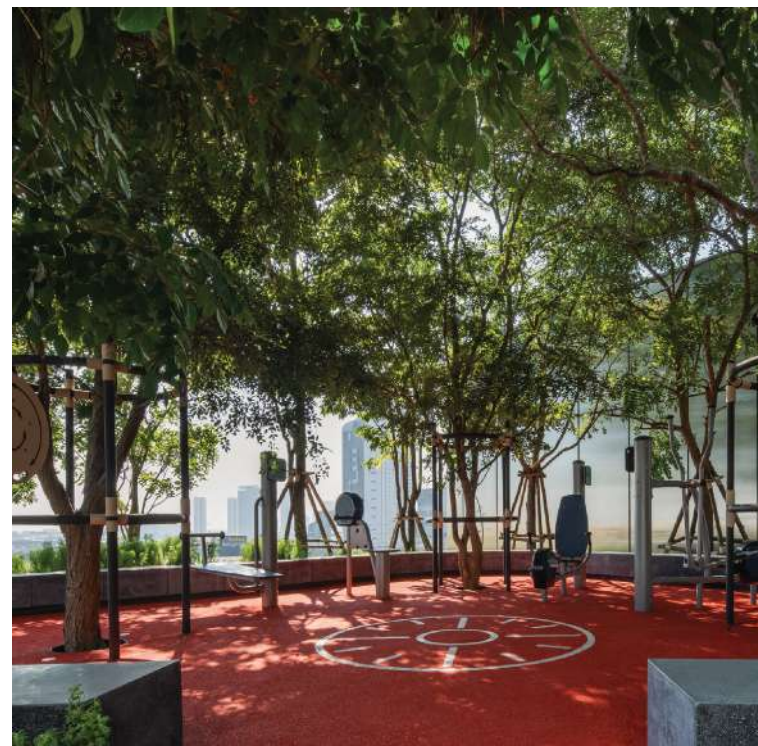
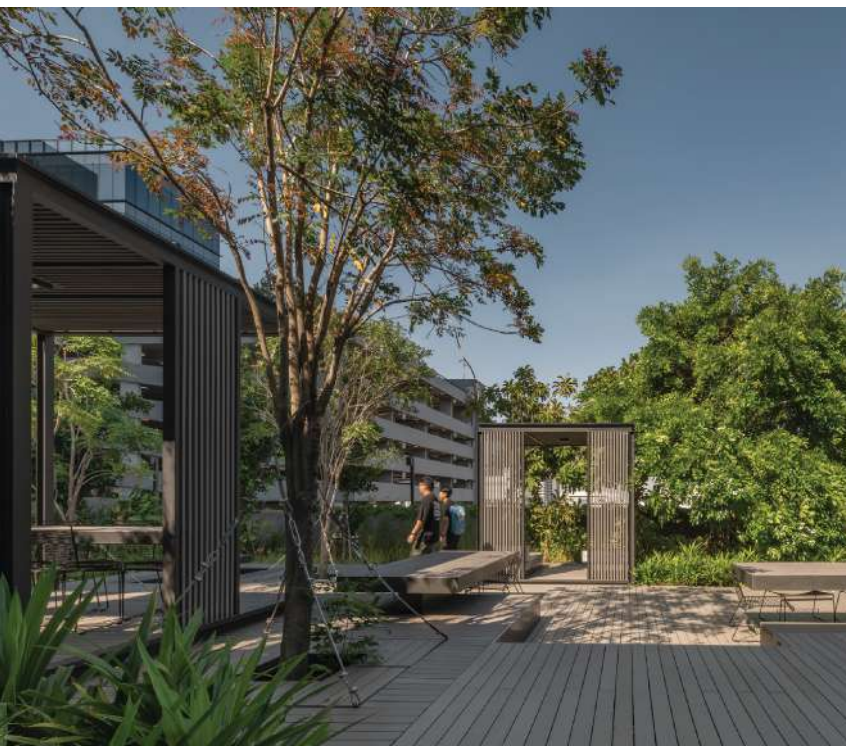


Nature Wellbeing

'Bangna' district has an elevation of only 0 to 0.5 meters above sea level. A rapidly growing economy with high construction density would result in lacking space to absorb water during rainfalls which leads to frequent flooding. AIA East Gateway building not only emphasizes well-being but is also dedicated to addressing the issue of flood-prone areas with nature-based solutions. The design ensures that the property can serve as a water retention area during heavy rainfall for 4 months and store up to 1,161.25 cubic meters of water. The significant keys of the design are the natural retention pond and the bioswale. The natural retention ponds also serve as a rainwater harvesting area and upcycle the water. All of the green spaces within the project are

designed as Rain Gardens capable of capturing and slowing down water flow. These gardens feature can also filter dust and contaminants before allowing the water to flow into natural ponds. These parts help to trap pollutants and slow down the water initially, then stored in rain harvesting tanks and undergo a nature-based purification process. The purified water is reused for various activities within the project.

With these design that is environmentally conscious and prioritizes the well-being of its users, the AIA East Gateway building has achieved the WELL Building Standard and LEED Building Certification. This Project is not only beneficial to the building's users but also for the people in the neighborhood and the surrounding area.



Lead Designer :

Prapan Napawongdee

Landscape Architect of Record :

Katavet Sittikit
Phat Chapanon
Ginsupa Tantiprasong
Rattnin Peewsook
Sorat Sitthidumrong
Sumonpan Kong-u-thaikul

Client/Owner :

AIA Group

Prime Contractor :

Meinhard (Thailand) Ltd.

Photography Credit :

W Workspace
Nawin Deangnul
Napon Jatrapuchapornpong

Architect :

Creative Crews

Horticulturist :

Supaluk Paorik
Jakkrapan Kongklum

Construction Manager :

Anongnard Jungmongkolsawat

M&E Engineer :

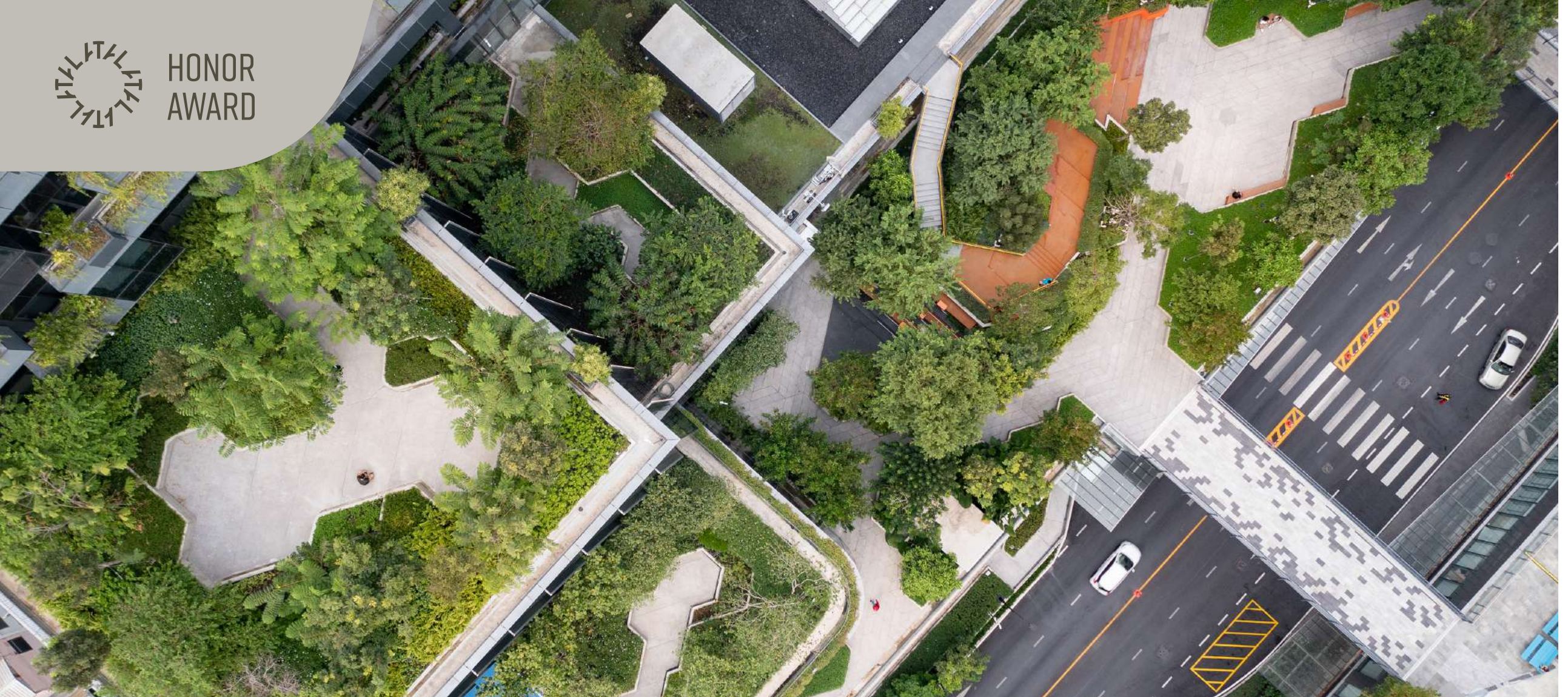
Meinhard (Thailand) Ltd.

Graphic Designer :

Chidapa Phruetthithananon



HONOR
AWARD



GENERAL DESIGN : Institution Campus | HONOR AWARD

TRUE DIGITAL PARK PHASE 2

Bangkok, Thailand

TK STUDIO CO., LTD.

True Digital Park, located in the Bangkok CyberTech District, stands as a hub for startups, tech entrepreneurs, investors, academic institutions, and government agencies. This project embraces the concept of “Open Innovation” and aims to blend work, entertainment, and lively environments with a strong emphasis on sustainability and high-quality amenities.

The second phase of True Digital Park is located next to the skytrain station and is surrounded by dense residential neighborhoods. Situated south of the first phase, it features a design with multiple layers and levels of circulation to optimize movement.

True Digital Park phase 2 is a 13-story building features up to 70% of its rooftop area as landscaped space with multi-level green spaces, creating the appearance of lush greenery covering much of its facade. It acts as green infrastructure that tackles urban pollution and fosters a vibrant, tranquil environment. The landscape design integrates digital elements, using the binary digits 0 and 1 to create an abstract, rhythmic pattern that reflects the digital world.



The project focuses on “Natural Systems and Biomimicry”. Inspired by natural patterns observed in plants, animal skin, flowers, and honeycombs, the design employs hexagonal shapes known for their efficiency and structural stability. This pattern is applied throughout paving, planters, feature walls, and site furniture, creating a cohesive and innovative design.

The ground floor introduces an urban forest concept with a geometric water feature that offers a calming retreat. Strategically placed bicycle racks, some with integrated seating, enhance functionality, while gentle ramps and blind guides ensure universal accessibility. Dense planting with multiple layers is intended to improve air quality and promote biodiversity.

Floors 2 to 3 primarily serve as circulation hubs. They connect to the skytrain station and link Phase 1 and Phase 2 via a pedestrian sky bridge, featuring a cycling lane and sky bridge for cyclists. These levels also offer green spaces such as outdoor dining areas, amphitheater, meditation court, and peace garden for tranquility. The upper floors are designed for relaxing activities, surrounded by dense greenery for privacy and comfort, ensuring a stimulating environment that fosters creativity and well-being. True Digital Park Phase 2 is a model of sustainability, incorporating low-impact design elements, and minimized energy consumption. With the planting of 300 trees, the project will produce oxygen, sequester carbon, and reduce local temperatures. It aims to seamlessly integrate architecture and landscape, creating a stimulating, healthy, and stress-free environment for all users.



Lead Designer :
Tawatchai Kobkaikit

Landscape Architect of Record :
Kamonkorn Chamchoy
Pasin Ratanarangsikul
Patcharanat Phokhinthanasiri

Client/Owner :
Whizdom Landmark Corporation Limited

Prime Contractor :
19th Landscape Co., Ltd.

Photography credit :
Rungkit Charoenwat

Architect :
Architect 49 Limited

Interior designer :
PIA Interior Company Limited

Structural and civil engineer :
Infra Technology Service Co., Ltd.

MEP engineer :
EEC Engineering Network Co., Ltd.

Lighting specialist :
Bo Steiber Lighting Design

Hardscape contractor :
Bouygues-Thai

Softscape contractor :
19th Landscape



AWARD
CATEGORY

02

GENERAL DESIGN

**PUBLIC SPACE
PRIVATE OWNED
(GD-PO)**

An open space owned by private sectors opened to public with or without any limitation. For example: a park in a residential complex, a playground, an urban plaza/ a park in front of the mall, etc.



AWARD OF EXCELLENCE



GENERAL DESIGN : Public Space Private Owned | AWARD OF EXCELLENCE

YANLORD THE PARK

Shenzhen, China

TROP: TERRAINS + OPEN SPACE

Shenzhen is a dynamic metropolis with a vibrant economy and diverse geography. Residents experience a fast-paced lifestyle with many opportunities and challenges. Our goal for this project was to create a space where residents can reconnect with nature, offering a tranquil environment to relax after busy workdays.

At the entrance, we designed a unique valley-inspired feature that offers a distinctive vertical experience. The site spans about 60 meters along the street and extends 30 meters deep, with a 1.5-meter height difference from the entrance to the municipal street. To address this, we created a series of three-dimensional flower pools that rise from ground level to the first-floor roofline. This design not only softens the entrance space but also provides a multi-level viewing perspective. It integrates the building interfaces with nature and creates green barriers for parking, pedestrian access, and emergency routes.



Users can explore the 3-dimensional green space and navigate various passages easily. Elegant holly trees strategically placed along the pathways add to the pleasant experience by partially blocking views and creating meandering paths.

To improve the area around the sunken courtyard near the entrance ramp, we replaced the original wall with a lush green terrace. The landscape design features cascading flower pools reminiscent of tropical rainforests.

Street-side green patches now replace the previous municipal greening, creating small passage ways that guide people into the business district. The design of the planters echoes the valley's natural texture.

The area next to the shops has been upgraded with seating and outdoor lounges, providing a relaxing space for users and convenient access through the green patches. This development enhances the public space and ecological environment, boosting the block's vibrancy.

Lead Designer :
Pok Kobkongsanti

Landscape Architect :
Fusang Ren, Yuting Lu
Kehan Zhou, Guo He
Pengtao Sang, Ke Ma

Client/Owner :
Shenyang Yanlord Land

Prime and Softscape Contractor :
Guangzhou Huayuan
Garden Co., Ltd.

Photography Credit :
Holi

Landscape Construction Drawings :
FANU Landscape Architecture

Architect :
HHDesign

Interior Architect :
SLD Group (Tianjin) Ltd.

Lighting Design :
Dasun (China) Co., Ltd.



HONOR
AWARD



GENERAL DESIGN : Public Space Private Owned | HONOR AWARD

ASCOTT THONGLOR

Bangkok, Thailand

TROP: TERRAINS + OPEN SPACE

The “Ascott Thonglor” project serves as a prime example of landscape architecture design focused on returning green spaces to the urban landscape of Bangkok. This project demonstrates a commitment to utilizing private land for public benefit by opening a large garden area in front of the development for public use. The concept behind creating this green space is clearly aimed at enhancing the environment and improving the quality of life for city dwellers who seek peaceful areas to relax and escape the hectic lifestyle of the Thonglor district. This garden design not only emphasizes the aesthetic beauty of the landscape but also showcases the developer’s responsibility in “giving back” green space to the city, where such spaces are currently limited. This idea aligns with sustainable urban development principles, allowing the public to share valuable resources like green space.

The large garden located on Sukhumvit Road in Thonglor acts as another “lung” for the city, providing freshness and comfort to both residents and passers by. The design process involved carefully relocating and preserving three sacred Bodhi trees from the site’s boundary to a central position within the garden.

These trees symbolize the connection between nature and Thai culture, holding spiritual and religious significance. Their relocation to the heart of the garden adds a symbolic and emotional dimension to the space, creating a link between the past and the future. The landscape design also incorporates Universal Design principles, ensuring accessibility for everyone, including individuals with special needs such as wheelchair users.

The garden was designed to be seamlessly integrated, with smooth, gentle slopes leading from the entrance to the lobby, enhancing the project’s overall harmony. The main design concept of the garden is “merging” by “blurring” the boundaries between architecture and nature.

Users experience the space without feeling constrained by defined borders. For instance, pathways leading to private pockets of space within the garden are cleverly hidden behind green walls and decorative screens, offering privacy while maintaining a connection to the outer area. In summary, “Ascott Thonglor” exemplifies social and environmental responsibility through the creation of green spaces for the city and the public, making it a model for using private resources for the greater good.



Landscape Designer :

Thongchai Sinsansiri
Peerasit Saengwanloy
Chanyarat Karoon-ngampun
Nakakamol Chueathue
Pitchayut Luadsoongnern

Construction drawing team :

Kampon Prakobsajakul
Pranom Khunlao
Piyakarn Kleebthong

Horticulturalist :

Piyakarn Kleebthong

Client/Owner :

ANANDA DEVELOPMENT PUBLIC
COMPANY LIMITED

Prime Contractor

Visavapat Co., Ltd.,
19th Landscape Co., Ltd.

Photography Credit :

Rungkit Charoenwat

Architect :

ARCHITECTS 49 LIMITED

Interior Architect :

PIA Interior Company Limited

Structure :

Setcom Co., Ltd.

M&E :

Optimum Consultants Co., Ltd.

Signage :

Cookiesdynamo Limited





EDIBLE GARDEN KM 15

Samut Prakan, Thailand

LANDSCAPE ARCHITECTS 49 LIMITED

Edible Garden, a communal green space nestled within a housing estate, is strategically designed to enhance community engagement through well-crafted areas that promote social interaction and connectivity. This garden is intentionally accessible, catering to a broad demographic from toddlers to seniors, ensuring that all community members can easily access and engage with the space. Materialized from the “communicative language” concept, the design moves away from the rigid, traditional square vegetable plots to a flow of natural curves and lines. This approach not only makes the space more inviting but also distinctively serene, setting a new standard for community garden design. Moreover, Edible Garden serves an educational purpose, introducing residents to a variety of lesser-known edible plants suitable for urban cultivation. The selection of plants is thoughtful, focusing on species that not only thrive in an urban setting but also contribute to health and wellness, engaging the senses with their diverse shapes, flavors, and aromas.

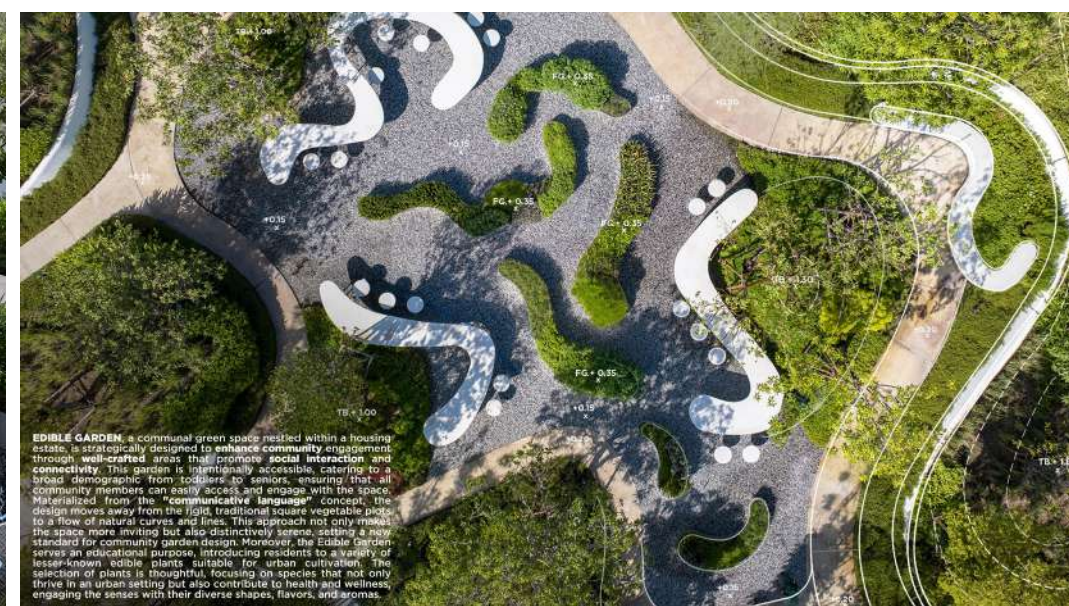
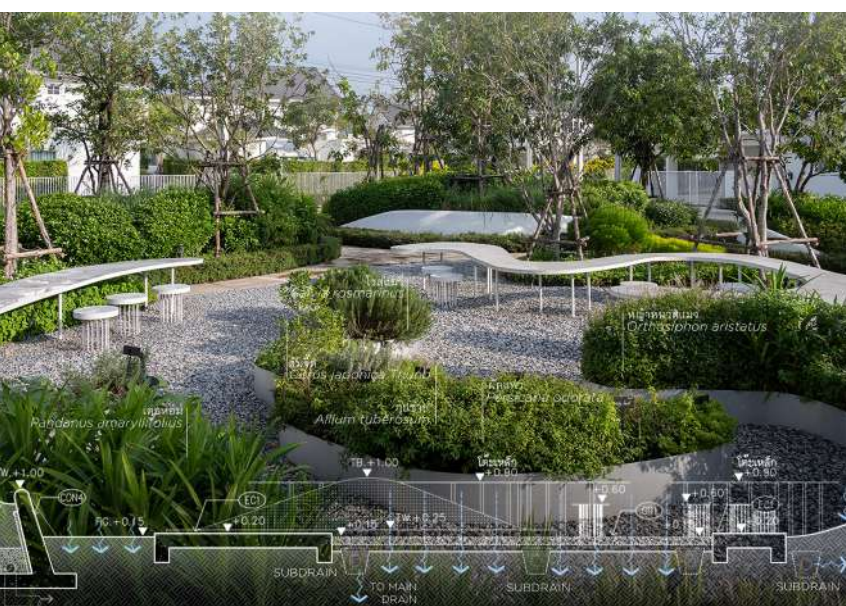


Edible Garden, nestled within a sprawling housing estate of over 300 homes, is meticulously crafted to cultivate community engagement. The communal green space is designed as an accessible and inclusive zone where residents of all ages can partake in shared activities. Commonly integral to traditional Thai households, edible gardens enable residents to cultivate their own produce, providing a refreshing counterpoint to the processed foods that dominate urban diets.

Guided by the “communicative language” concept, the garden adopts organic forms—sweeping curves and fluid lines—that stand in stark contrast to the conventional, rigid square vegetable plots. This language of landscape design permeates the project, transforming the area into a sanctuary that is both inviting and soothing. The layout of tables, seating, and planters is thoughtfully arranged to meld with the natural environment, fostering

a gathering space that encourages interaction and seamlessly connects people with nature. This integration not only beautifies the space but also serves functional and educational purposes. Cultivated within the garden are familiar culinary staples such as chilies, Thai basil, parsley, and coriander—each chosen for their health benefits and sensory appeal. The garden further incorporates a selection of medicinal plants aimed at stress relief and pest control, including peppermint, rosemary, and patchouli.

Additionally, betel leaf and Philippine violet are specifically cultivated for their insect-repellent properties. Completing this healthful ensemble, herbs like rosemary, lavender, and citronella grass are strategically placed throughout the garden, enhancing its capability to naturally deter pests and create a holistic, therapeutic environment.



EDIBLE GARDEN, a communal green space nestled within a housing estate, is strategically designed to enhance community engagement through well-crafted areas that promote social interaction and connectivity. This garden is intentionally accessible, catering to a broad demographic from toddlers to seniors, ensuring that all community members can easily access and engage with the space. Materialized from the “communicative language” concept, the design moves away from the rigid, traditional square vegetable plots to a flow of natural curves and lines. This approach not only makes the space more inviting but also distinctively serene, setting a new standard for community garden design. Moreover, the Edible Garden serves an educational purpose, introducing residents to a variety of lesser-known edible plants suitable for urban cultivation. The selection of plants is thoughtful, focusing on species that not only thrive in an urban setting but also contribute to health and wellness, engaging the senses with their diverse shapes, flavors, and aromas.

Lead Designer :
Arrak Ouyiamaphan

Landscape Architect of Record :
Chanarat Ouisakul
Nattamas Khowsihawat

Client/Owner :
Land and Houses Public Company Limited

Photography credit :
Rungkit Charoenwat



THE UNICORN PHAYATHAI

Bangkok, Thailand

LANDSCAPE COLLABORATION CO., LTD. (LCO)

Private plaza as a public space could be the new way for private developers to provide contribution to the general public. A plaza could become open space that provides refuge for pedestrians along the busy streets and the skyscrapers. The landscape plaza in front of the Unicorn complex provides such benefits to the city. Although small and simple, the plaza provides a resting area for the public with shading from trees and relaxing atmosphere of water features.

The Unicorn plaza is located next to Phayathai BTS station. There is an escalator that links people from the sky train directly to the development and the plaza below. People could enjoy resting on the benches under the tree canopies. These trees help to balance the scale between human and the high-rise building, which provide the comfortable feeling as a result. The plaza is designed to be absolute level in order to maximize the use of the plaza surface. The raised floor system helps to create the flatness but still allows water to seep through the paving with the drainage system below the surface. With the flat surface, the connection from the outdoor plaza is seamless. For the public connection, the universal design slope is integrated on the side of the plaza. In the front area, the large gentle steps are located in order to provide a gentle connection from the public walkway to the plaza at the higher level. Everyone could enjoy the water feature which is designed for the plaza to perform with three different design configurations.

First water effect is the reflecting pool surface. The water will fill the part of the plaza surface and create a water body that people could enjoy visually. The plaza now becomes a relaxing place with a small pool. Second water effect is the dry fountain effect.

By turning off the reflecting pool system, the dry fountain creates visual and physical movements that allow visitors to engage with active activities. The plaza becomes livelier with the movements of the fountain. The last effect is the flexible plaza where there is no water on the surface. This system allows the plaza to be fully flexible for events and other uses.

Open space within the city is very valuable for the public, especially for the city of Bangkok where the well-designed public open space is very scarce. By maximizing the surface use of the plaza with the technological advance in water feature design, the Unicorn plaza provides a flexible public open space that could enhance the daily use of the public.



Lead Designer :
Somkiet Chokvijitkul

Landscape Architect of Record :
Nopnara Katekaewmaneeratana

Client/Owner :
Kamkoong Property Company Limited

Prime Contractor :
TREE3 LANDSCAPE COMPANY LIMITED

Photography credit :
Rungkit Charoenwat

Architect :
Palmer & Turner Thailand Ltd.

Sculpture Design :
Dong Sculpture





PORTO DE PHUKET

Phuket, Thailand

XSITE DESIGN STUDIO CO., LTD.

This project is located in Phuket, the most famous tourist destination for foreigners and local travelers. This new development transforms an abandon land into The Finest Living Experience mall that promote a new lifestyle of shopping and dining in green outdoor spaces. During site survey, Landscape architect team was fascinated by the natural of the existing swamp forest ecosystem setting on the site with abundant trees. Thanks to the collaboration with architects and clients, this project could save over 200 native existing trees on the site.

“The planning concept takes inspiration from local fishing villages, where buildings are grouped to create spaces surrounded by green areas, which cover 32% of the total site—well above the average for developments of this kind. Additionally, 70% of the site is devoted to open space, significantly surpassing the typical mall layout. With 45% of the common areas featuring permeable surfaces, the design greatly enhances water absorption, making it especially suited to Phuket’s climate. The main concept design takes the inspiration from Phuket’s Plateau which is the existing geological formation of the site. There is a triangular iconic landform that abstracts the original form of Phuket’s Plateau. This landform represents local identity of Phuket’s landscape and become a landmark of the project. Moreover, welcome reflecting pool reflects the nostalgic of local fishing village and also restores water during the heavy rain. At the mall outdoor area, paving is designed to interpenetrate into the green spaces that harmoniously blur the edge of hardscape and softscape. There are variety scale of the walking spaces which are

extend wider to facilitated the events or pop-up stores, some areas are providing resting spots for visitor to relax and enjoy being in nature. Also, some of the green spaces are connected with the interior design of the restaurant offer comfortable outdoor dining experiences.

The planting concept is to preserved the existing local trees such as Brown salwood (Acacia mangium Willd.) The visitors will see various green spaces which forming group of existing and new additional trees in the courtyard or along the walkways. By adding only one type of tree which is local tree, Para rubber tree. (Hevea brasiliensis Muell. Arg.) Thanks to several green patches spread throughout the site, these small yet effective green areas are all function to allow natural water infiltration.

Porto De Phuket is the finest lifestyle mall that offers not only the one-of-a-kind outdoor shopping and dining experiences but also promote the relationship between people and natural environment together with the identity of Phuket that allows visitors to enjoy public spaces comfortably in the new normal situation.



Lead Designer :
Thotthanet Luekijna

Landscape Architect of Record :
Thotthanet Luekijna

Client/Owner :
Central Group Co., Ltd.

Prime Contractor :
POWER LINE ENGINEERING PLC.
(Hardscape)
NINETEENTH LANDSCAPE CO., LTD.
(Softscape)

Photography credit :
Rungkit Charoenwat

Architect :
Studio Architects Co., Ltd.

Structural :
VSD Consultant Co., Ltd.

Consultant :
G22 Engineer and Architect Co., Ltd.

Electrical, Mechanical Engineer :
MITR Technical Consultant Co., Ltd.





AWARD
CATEGORY

02

GENERAL DESIGN

**PUBLIC SPACE
NON PRIVATE OWNED
(GD-NO)**

A public open space owned by public sectors such as a public park, a water front area, a streetscape, an urban plaza, a community space, a sport/recreation facility, etc.



AWARD OF
EXCELLENCE



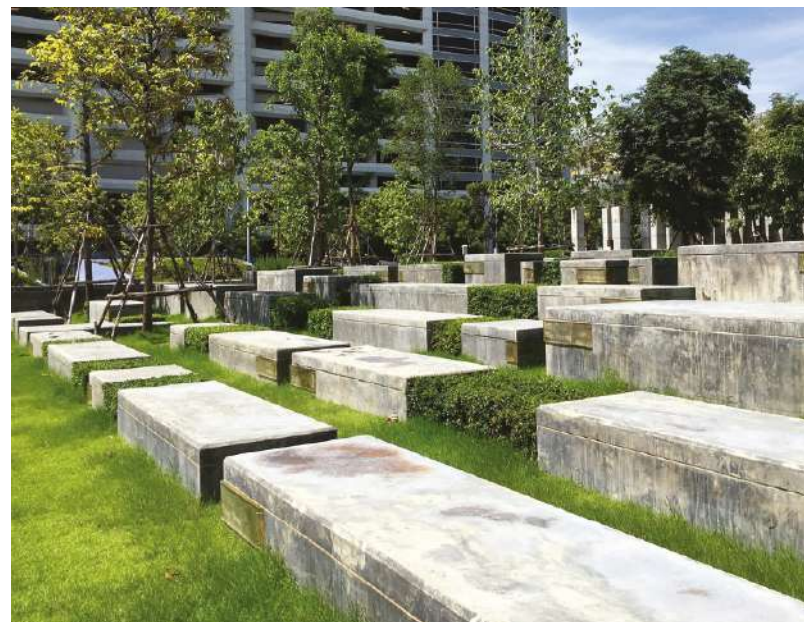
GENERAL DESIGN : Public Space Non Private Owned | AWARD OF EXCELLENCE

PATHUMWANANURAK PARK PHASE 2

Bangkok, Thailand

RAFA DESIGN OFFICE CO., LTD.

Human and nature relationships are indivisible, both directly and indirectly. The growth of population, inevitably, results in more extended urban areas, thereby making people remote from nature. Therefore, such intimate relationships and perceptions are gradually vanished. Patumwananurak Park is thoughtfully designed to fulfil the mentioned gap with expectation to growth environmental ethics for the next generations.



H.M. King Rama 9 was incredibly intelligent with in-depth and a wide range of knowledge fields, especially the synthesis of critical theories, relating to environmental conservations and problem's solutions, Sewage, Soil treatment, Toxic air, Forest rehabilitation and Human development. These problem-solving sustainable theories, based on simplicity and equilibrium, teach people to live with nature and to be mutually dependent. The main design principles of the Patumwananurak Park, following H.M. the King's initial purposes, are ingeniously translated into landscape-art designs with prospect of enhancing more direct relationships between people and nature and increasing environmental conservation concerns.

• **Water:** Many theories of waste water retreatment using aqua locally plant species are studied and developed by H.M. the King. Adjacent to the project is a public canal, therefore the design is to apply those theories, carrying out a showcase study of natural waste water treatment area within the project. According to the measurement standard, the cleanliness of treated water in the last pond is pleasingly suitable for aqua living organs.

• **Earth:** The dominant features here are the 'Earthen walls', compressed vertically earth's layers in different colors, giving strength and durability amidst different circumstances and climates. the design concept of the walls is inspired from the method of soil profile, used by H.M. the King in studying soil's problems across the country. The design has stimulated some interest of geology studies, love and harmony among the people who use this place.

• **City-Forest :** The concrete columns along the ramp, leading to the main exhibition building, represent symbolic features, which can be interpreted differently, depending on individual's imagination. For example, if one perceives these features as high-rise buildings, one may feel oneself being in a large cityscape. While, if one looks up towards the sky or the groups of trees, one may perceive the greatness of nature.

• **Air :** The design concept of the main part of the outdoor amphitheatre is introduced by comparing the ratio between the concrete textures, representing urbanization with air pollution problems, and the adjacent shrubs, representing the green areas scattering around the metropolis.

Lead Designer :
RAFA Design Office Co., Ltd.

Landscape Architect :
RAFA Design Office Co., Ltd.

Client/Owner :
Pathumwananurak Foundation

Prime and Softscape Contractor :
GREEN THUMB Co., Ltd.

Photography Credit :
RAFA





AWARD OF
EXCELLENCE



BENJAKITTI FOREST PARK PHASE 2-3

Bangkok, Thailand

ARSOMSILP COMMUNITY AND ENVIRONMENTAL ARCHITECT

Benjakitti Park is an urban park located in the former Tobacco factory area, owned by The Treasury Department, Ministry of Finance. The site covers 720,000 sq.m. After The Tobacco factory was relocated, the site was developed to become an urban park in Bangkok.

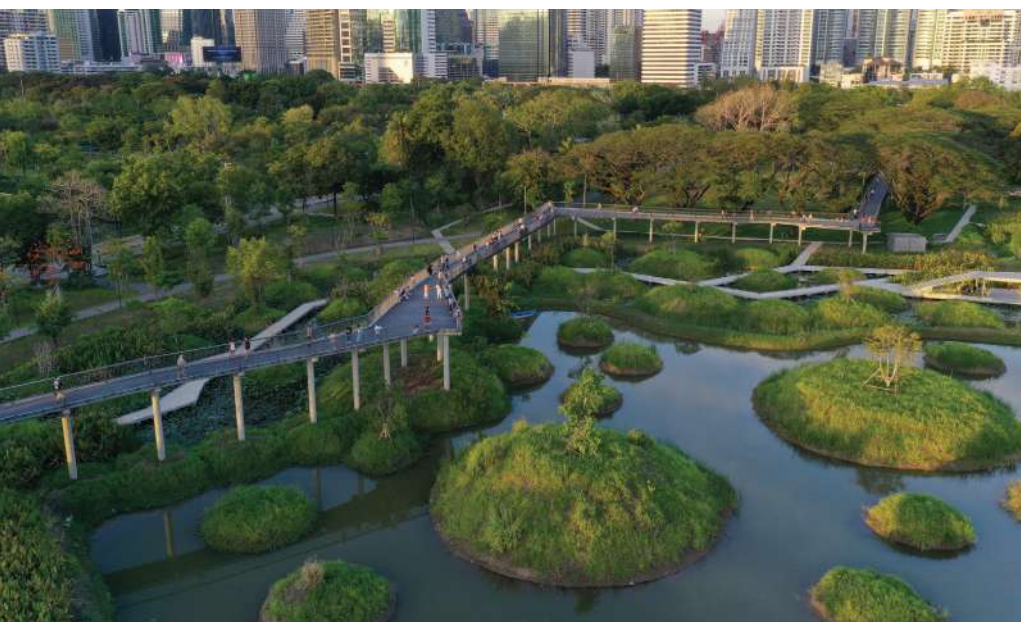
With Thailand's monsoon climate flood and drought are significant problems. The design acts as a 'sponge', large sponge that retains rainwater in the rainy season and discharge water in the dry season with 128,000 cu.m. water capacity. The water from Phai Sing To canal, located next to the site is contaminated with urban runoff and sewage, is purified with bioremediation by using wetland plants, producing 1,600 cu.m. clean water/ day. The site is flat and low-lying, with an average elevation of just 0.5 meters. Most of the area was originally swampland with high groundwater levels. Thai conventional agricultural wisdom method is used to keep the tree roots higher to avoid floods and have raceways to help drain water and irrigation canal.

This project transformed hard clay surface soil into wet and spongy habitat, allowing a rich native plant community to establish itself with minimal irrigation. Planted 5,600 seedlings of 360 species, which are rare indigenous trees of the central river basin. Mixed with small to medium sized plants that provide shade to help seedlings grow. All existing trees on site were preserved and integrated into the park design. The design uses cut and fill earthwork techniques within the site to create landform character. Site material is reused, the stone and concrete from site demolition is used as the foundation of the berm island and water filtration layers. Reused existing concrete paving blocks used as bicycle parking pavement.

The former tobacco factories are renovated into various facility buildings. The park is accessible by all, from people around the surrounding community to people throughout Bangkok who wants a space to

immerse into the holistic ecosystem. Islands within the wetlands also serve as sanctuaries for other species to seek refuge. The area within the park is connected by a 1.67 km. long skywalk, with universal design. The skywalk is a running path, leisure path and nature learning path. Variety of spaces, inclusive for all ages and groups are integrated such as bicycle ways, path under tree canopies, board walk, healing garden, sunshine lawn and a waterfront pavilion with an amphitheater. The renovated factory buildings will also become museums and sports centers with sun-roofs, high ceiling ventilation systems and trees for indoor air quality will make the buildings energy-efficient within limited budget.

Creating a holistic ecosystem for the city, this forest park will become a biodiverse botanical classroom for Bangkokians.



Landscape Architect :
Landscape Studio by Arsomsilp

Client/Owner :
The Treasury Department

Others :
TURENSCAPE (Design Consultant)
Thai Royal Army
Tobacco Authority of Thailand





AWARD OF
EXCELLENCE



GENERAL DESIGN : Public Space Non Private Owned | AWARD OF EXCELLENCE

PRASARN

Nakhon Sawan, Thailand

LANDSCAPE COLLABORATION CO., LTD. (LCO)

Prasarn is a symbolic architectural project located on approximately 3 rai of land at Koh Yam, where the Ping River meets the Nan River in Pak Nam Pho District, Nakhon Sawan Province. This site marks the beginning of the Chao Phraya River, a vital artery of Thai life for generations. The construction of Pasarn resulted from a collaboration between the Nakhon Sawan Municipality, the Rak Chao Phraya Club, and local residents, aimed at developing a new landmark tourist attraction in Nakhon Sawan Province. This initiative promotes the learning of local history, culture, and riverside lifestyles, while also enhancing the livelihoods and economies of the surrounding community.



The design of Prasarn is thoughtfully integrated into the landscape, drawing inspiration from the traditional architectural styles of the region. The project features open spaces that invite visitors to explore the natural beauty of the riverside while also providing educational exhibits that highlight the importance of the rivers in shaping the local culture. It serves not only as a tourist destination but also as a community hub where local artists and craftsmen can showcase their work. Support for the project has been broad and multifaceted, involving various stakeholders including the Department of Tourism,

the Ministry of Tourism and Sports, and the Association of Siamese Architects under Royal Patronage.

This collaborative effort reflects a shared commitment to preserving and promoting Nakhon Sawan's unique heritage. By attracting both domestic and international tourists, Prasarn aims to stimulate economic growth in the region, ensuring that the cultural narratives of the local community continue to thrive for future generations. Through its educational programs and community engagement, Prasarn stands as a beacon of cultural appreciation and sustainable tourism.



Lead Designer :

Touchapon Suntrajarn

Landscape Architect :

Nattawadee Kamjaipai

Client/Owner :

Nakhon Sawan Municipality Office

Prime and Softscape Contractor :

Chareon Pan Panich (1984) Co., Ltd.

Photography Credit :

Thairath Online, Facebook Page เรารักนครสวรรค์,
Facebook Page ชวนเที่ยวคอนหัวหิน, phephatiew.com,
On the Road x พายเรือเพื่อเจ้าพระยา, Royal Irrigation Department





HONOR
AWARD



GENERAL DESIGN : Public Space Non Private Owned | AWARD OF EXCELLENCE

HAPPY AND HEALTHY BIKE LANE: CHILDREN'S BIKE PARK

Samut Prakan, Thailand

P LANDSCAPE CO., LTD.

Happy and Healthy Bike Lane is located near Suvarnabhumi International Airport and was opened to the public since 2018. The bike lane has gained widespread popularity among children, youths, and families. It is designed to promote both physical and mental well-being, with the primary goal of raising awareness about cycling, nurturing a new generation of cyclists and runners, and creating a model for public green spaces in Thailand.

Bangkok has a shortage of outdoor play areas, the Children's Bike Track at the Happy and Healthy Bike Lane is the city's largest cycling facility, offering children a unique outdoor space. The track is a 1.6 km. loop located near the main entrance, aim to be a welcoming space where children can exercise and explore. The once-flat, swampy site was regraded with swales to shed water, keeping the trails elevated and dry during the rainy season. One of the standout design features is the consideration of the existing environmental constraints. The designers carefully planned improvements to the area's water and soil quality. The site's centerpiece is a 3-4-meter-high "mountain" with a bioswale that transforms into a pond in the rainy season, promoting awareness of water management among children.

Free bikes are available at the entrance, and the facility includes restrooms and a rooftop waiting area. The park's main 800 m. loop connects to various trails, including the pump track, divided into three skill levels with soft grassed areas for safety and rest. The mountain trail leads through teak trees to a bridge and resting area offering views across the park, with a tunnel beneath for shade. The materials used include asphalt for the main track, timber for trails, concrete for balance trails, and stone dust for mountain bike paths. The planting was crucial due to the extreme heat, with nearly 300 trees of 12 species added for shade, divided into thematic zones like jungle, mountain, and forest. Since the airport prohibited plants that attract wildlife, species were selected for their resilience, low maintenance, and fast growth to thrive in the poor, compacted soil left over from the airport's construction.



Landscape Architect of Record :
P Landscape Co., Ltd.

Client/Owner :
Cycling Track Management
Company Limited, AOT and PTT





BTS PHROMPHONG SKYWALK

Bangkok, Thailand

P.L. DESIGN CO., LTD.

BTS Phrom Phong Skywalk

Connecting Urban Life for Sustainable Development The EMS BTS Skywalk project presents a vision of the future for sustainable urban development with the concept of 'GREEN DYNAMIC CONNECTION', using green spaces to connect people, commercial areas and tourism with nature. Located on Sukhumvit Road in the heart of Bangkok's business and tourist district, the 238-meter-long skywalk covers 1,674 square meters. It connects Phrom Phong BTS station with leading shopping malls and Benchasiri Park, establishing a seamless and safe pedestrian network. With a nature-enriched modern design, the spacious 6-7 m. wide skywalk is integrated with planting, creating a pleasant walking experience in the city. Carefully selected small trees, shrubs and climbing plants suitable to the urban environment form a simulated ecosystem, linking nature from ground level up.

BTS Phrom Phong Skywalk is not just a pathway but a public space that enhances the quality of urban life. It gives commuters a sense of relaxation, filters airborne pollutants and promotes exercise and social interaction, reducing reliance on private vehicles, alleviating traffic problems, and reducing the creation of pollution.

The project has set a new standard for skywalks in Bangkok by introducing a design approach that considers sustainability, safety, and versatility, which can be applied to other areas of the city in the future. Additionally, the project promotes economic development in the area by connecting business and commercial zones, boosting tourism, and creating new economic opportunities.

BTS Phrom Phong Skywalk is not just infrastructure, it is an example of sustainable urban development that combines modern technology and environmental consciousness to improve quality of life and create a more livable future for the city of Bangkok. It demonstrates how thoughtful urban planning can transform city spaces, promoting green living, enhancing connectivity, and fostering community interaction. By bridging gaps between transit, commerce and nature, the BTS Phrom Phong Skywalk paves the way for a more integrated, sustainable, and vibrant urban environment.



Lead Designer :
Chanipat Chavananont

Landscape Architect of Record :
Prapaporn Tharasaithong
Cherdchanok Treevanchai

Client/Owner :
The Mall Group Co., Ltd.

Prime Contractor :
Art Green Gardening Co., Ltd.
Kure Paiboon Co., Ltd.

Photography Credit :
Dulyanut Sawaddiphap

Architect :
Design 103 International Ltd.

Structure Engineer :
Ceda Co., Ltd.

Lighting Designer :
APLD CO., LTD.

M&E Engineer :
EM sign Co., Ltd.



AWARD
CATEGORY

02

GENERAL DESIGN

OTHERS
(GD-OT)

Other projects which are not matched to
any sub-category in General Design Category



AWARD OF
EXCELLENCE



GENERAL DESIGN : Others | AWARD OF EXCELLENCE



VALLEY ENTRANCE L&H PARK KM15

Samut Prakan, Thailand

LANDSCAPE ARCHITECTS 49 LIMITED

The design of VALLEY ENTRANCE L&H PARK KM15, the main gateway to three expansive housing estates comprising over 600 residential units, serves as a transformative tool aimed at enriching the everyday lives of the residents. With a keen sensitivity to the temporal shifts between daylight and darkness, the entrance offers ever-shifting perspectives and experiential richness. Drawing inspiration from the undulating forms of a valley, the use of organic shapes throughout the design invites tranquility and elevates the aesthetic dialogue of the space. Striking vertical elements, such as white walls, stand in vibrant contrast to the lush greenery, fostering a serene environment. This designed landscape doubles as a functional green buffer and corridor, mitigating pollution and seamlessly integrating the estates with the surroundings.



Functioning as the primary conduit to the residential enclaves of 3 housing estates, Mantana, Chaiyapruek, and Laddawan, which collectively house over 600 residences, VALLEY ENTRANCE L&H PARK KM15 marks a 10-acre frontage dedicated to communal access. Located in

the industrially, residentially, and commercially vibrant Bang Na district of Samut Prakarn, this area was previously a neglected tract of land. Now, fronting a bustling 12-lane road capped by an imposing 15-meter-high expressway, the site grapples with the relentless hum and pollution of heavy traffic.

Lead Designer :
Arrak Ouyiamaphan

Landscape Architect :
Chanarat Ouisakul
Tanyamon Tippitak

Client/Owner :
Land and Houses
Public Company Limited

Prime and Softscape Contractor :
Italian-Thai Development
Public Company Limited

Photography Credit :
Rungkit Charoenwa





BHIRAJ TOWER AT SATHON

Bangkok, Thailand

1819 COMPANY LIMITED

In the past, Sathon Road was once a canal used for transportation, which led to the development of many warehouses in the area. Later, Sathon Road was constructed, and the warehouses began to disappear, being transformed into high-rise buildings that reflect contemporary times. As a result, the awareness of Sathorn Canal's history has diminished, leading to the idea of developing the area while preserving the characteristics of the old warehouses and the original vegetation along the canal.

The Bhiraj Tower project emerged from the renovation of the old warehouses, transforming them into multifunctional spaces, such as relaxation areas, restaurants, offices, parking spaces, and event venues. This transformation aligns with the current lifestyle of people in Sathon, a significant economic hub in Thailand, while still retaining the area's original charm.

The main concept of the landscape architecture design aims to recreate the lush atmosphere of “Sathon Canal” in this space once again. This is achieved by blending the original architectural styles, building materials, and existing trees with a modern, contemporary design that responds to the needs of those moving through Sathon. The project aims to evoke a relaxed, unhurried image of historical Sathon, all while showcasing a modern look that appeals to younger generations.

The peacock flower trees along Sathon Canal are an important characteristic of the area. Therefore, the landscape architect incorporated designs inspired by the peacock flower into triangular forms that intertwine, reflecting the context of the area through geometric aesthetics. This design also symbolizes the project’s owner. Additionally, the original context of the area is preserved physically, such as the existing trees, building shapes, and unused construction materials, which are adapted into various arrangements to harmonize with the development of the project.



Lead Designer :
PALANG SITTITHAWORN

Landscape Architect of Record :
THUNHAPOL JUNGSANGASOM
KANOGKAN TUNGPANYALERT
WICHAN SAEKONG

Client/Owner :
BhirajBuri Company Limited

Prime Contractor :
19 landscape

Photography Credit :
CHAKRAPHOP SERMPHASIT

Architect :
BURASATHARN COMPANY LIMITED





AWARD
CATEGORY

03

MASTER PLANNING :

DOMESTIC - INTERNATIONAL PROJECT (MP)

Long-term master plan, which is a real project, such as a university master plan, a public/private organization, a community plan, a residential complex master plan, a planning of large public area, an ecosystem /environmental restoration master plan, a master plan for a conservation area, etc.

* As it is a long-term project, it is not necessary to be completely built before the submission date



AWARD OF EXCELLENCE



MASTER PLANNING : Domestic - International Project | AWARD OF EXCELLENCE

GC CHEMICAL EXPERIENCE CAMPUS

Rayong, Thailand

RAFA DESIGN OFFICE CO., LTD.

GC Chemical Experience Campus: A Visionary Blend of Science, Nature, and Community GC Chemical Experience Campus is a groundbreaking initiative under the stewardship of PTT Global Chemical Public Company Limited. This innovative project is designed to be:

- A cutting-edge learning center for GC employees, students, and the general public, showcasing the evolution of Thailand's petrochemical industry and demonstrating how petrochemicals can be transformed into a diverse array of environmentally friendly products.
- A state-of-the-art training facility aimed at enhancing the knowledge, skills, and work experiences of employees across various departments.
- A comprehensive sports and recreation complex, featuring both indoor and outdoor facilities, designed to boost employee health.

Design Concept and Master Plan Inspired by PTT Global Chemical's focus on petrochemicals industry, the architect and landscape architect have crafted a campus-style layout that mirrors the molecular bond structures found in chemistry. This innovative approach, dubbed Chemical Synergy: Fusing Science, Nature, and Community.



Key Elements of the Master Plan:

- High-Quality Green Spaces**
: Transforming former sandy soil and pineapple plantations into lush, verdant areas that revitalize local ecosystems, support various activities, and serve as a green lung for neighboring communities.
- Community Engagement**
: Developed through extensive local consultation, reflecting a deep understanding of and response to regional needs
- Learning and Recreation Hub**
: The GC Chemical Experience Campus will evolve into a miniature community forest, offering environmental education and biodiversity experiences alongside family-friendly recreational spaces for both GC employees and the public.
- Interactive Learning Pathways**
: Connecting various zones with hands-on exhibits and experiments, promoting experiential learning throughout the campus.
- Sustainable Water Management**
: Addressing Eastern Thailand’s water challenges through thoughtful landscaping, creating reservoirs in low-lying areas, and implementing natural filtration systems.

- Sustainable Design**
: Emphasizing passive design principles to minimize mechanical and energy usage, demonstrating the feasibility of nature-aligned development throughout the project.
- Model for Sustainable Development**
: Showcasing how industry can simultaneously benefit society, the environment, and business growth.
- Balanced Earthwork**
: Carefully planned to manage the 20-meter elevation difference across the site, preventing water logging and minimizing soil import or export. Master plan creates a living laboratory that educates, inspires, and fosters innovation. It demonstrates how chemistry can drive sustainable development and community engagement while offering an exciting and enjoyable experience for visitors of all ages. This project stands as a beacon of how industry can harmoniously blend with science, nature, and community, creating a space where learning, innovation.

Lead Designer :
Space Architects Co., Ltd.
RAFA Design Office Co., Ltd.

Landscape Architect :
RAFA Design Office Co., Ltd.

Client/Owner :
PTT Global Chemical
Public Company Limited

Photography Credit :
RAFA

Interior Designer :
P49 Design & Associates Co., Ltd.

Architect :
Space Architects Co., Ltd.

Lighting Designer :
With Light Company Limited

Civil & Structure Engineer :
SMC Consultant Engineers Co., Ltd.

M&E Engineer :
MITR Technical Consultant Co., Ltd.





AWARD OF EXCELLENCE



MASTER PLANNING : Domestic - International Project | AWARD OF EXCELLENCE

RAINTREE RESIDENCE KHAOYAI

Nakhon Ratchasima, Thailand

P LANDSCAPE CO., LTD.

The Raintree Residence Khaoyai is a renovation and expansion of the original Raintree Hotel Khaoyai, located in Nakhon Ratchasima, Thailand. The project sits on a 42 rai (67, 200 sq. m.), initially developed by a famous publishing house and educational organization, with a vision rooted in experience-based education and the power of reading, Raintree Residence Khaoyai is not only as a retreat for physical and mental rejuvenation but also an inspiring space where guests can engage with nature and learning, enhancing their sense of well-being and connection to the environment.

The Landscape concept integrates outdoor experiential learning, blending art and science through direct interaction with 6 natural elements such as flora, fauna, sunlight, wind, soil, and water. The design philosophy emphasizes the balanced engagement of both right and left hemispheres of the brain, developing in parallel creativity and reasoning. This is achieved through immersive activities like sensory exploration of plant textures, engaging in nature-based scavenger hunts, and observing local ecosystems such as bird watching.

The project offers family-friendly learning activities across both indoor and outdoor spaces under the concept of “Natural Learning Space.” It has also been recognized by the National Astronomical Research Institute of Thailand (NARIT) as a certified Dark Sky Conservation Area, making it a prime location for stargazing.

The landscape architecture leverages the site’s topography, characterized by its undulating terrain and varying elevations. The master plan strategically incorporates several key principles; Planting strategy, water management and sustainable landscape architecture.

Planting Strategy is ecologically responsive, featuring native and seasonal flora suited to various microclimates, including wet areas, exposed slopes, and shaded zones. The planting design is categorized into three groups: winter bloomers, perennial and year round blooming species. Economic trees that produce resin, fiber and oils are also planted to provide variety.

Water management approach is prioritized, favoring natural systems over engineered solutions. Techniques such as bioswales, open channels, and retention ponds manage water flow, reducing erosion and ensuring water retention. Local construction methods, using soil-stabilizing cow dung for pond linings has proven to be successful for water conservation.

The sustainable landscape’s framework emphasizes on low environmental impact design, optimizing materials, energy use, and site integration. Structures are lightweight, with open terraces to harness natural ventilation. Staggered elevations are incorporated to provide privacy for each zones, while car-free policy further highlights the hotel’s eco-friendly ethos, with electric golf carts used as the mode of transportation.



Landscape Architect :
P Landscape Co., Ltd.

Client/Owner :
Nanmeebooks Co., Ltd.



BANGKOK UNIVERSITY KOALA MASTER PLAN

Pathum Thani, Thailand

LANDSCAPE ARCHITECTS 49 LIMITED

Bangkok University, a leading private institution in Thailand, is renowned for its dedication to fostering high-caliber professionals and significantly contributing to the societal fabric across generations, living up to its ethos, “Bangkok University, the Creative University.”

The university plans to develop an underutilized area with student dormitories, recreational spaces, relaxation zones, and a commercial district near the railway station. To improve accessibility, the project includes strategic site planning with zoning and traffic routes, ensuring seamless use of the spaces for both the university and the community.

Central to this initiative is the concept of elevated bicycle path, designed to enhance connectivity and convenience, support environmentally friendly transportation by reducing carbon dioxide emissions, and promote cycling to improve the health and well-being of students and staff. Moreover, these pathways serve dual functions as covered walkways for pedestrians, enhancing the user experience along their entire route.



The site's redevelopment is designed with future public accessibility in mind, featuring ample parking for external visitors and large event spaces that integrate seamlessly with student residential areas. A strategic plan to manage internal bus traffic is also in place to control the influx of external vehicles.

The visionary concept behind this redevelopment is the "Diamond Mine" a metaphor for the untapped creative and intellectual capacities of students. The architectural design leverages open spaces and natural surroundings to support students in discovering and refining their talents, ensuring they shine with brilliance. This aligns with the overarching theme of "DIAMOND MINE - Mining the creative mind," reflecting a commitment to cultivating a fertile ground for innovation and creativity. Research highlights the importance of environmental factors in fostering imagination, creativity, and learning. The design emphasizes interactive

communication (Connecting -Sharing-Speaking), dynamic movement, and exposure to various experiences to stimulate a vibrant exchange of ideas and anecdotes, fostering a community that thrives on creative thinking.

The project also prioritizes physical activity, incorporating various sports and active recreational areas, both aquatic and terrestrial. These facilities are strategically placed and easily accessible, using the university's existing ponds for water sports and surrounding areas for relaxation and leisure.

Pathway designs connecting different campus points are crafted to improve the user experience, offering diverse and engaging routes that encourage exploration and relaxation while meeting practical needs and enrich campus life with great comfort and convenience. Not only that, they are designed to integrate harmoniously with the existing environment, crafting a coherent and cohesive new setting.



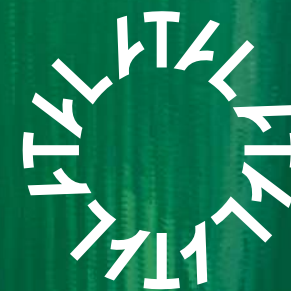
Lead Designer :
Mr. Arrak Ouyiamaphan

Landscape Architect of Record :
Suttida Tharanatham
Nattapong Meechaiya
Prachya Bausomboon
Waratchaya Charoenpol
Naruenan Tangjaipitak

Client/Owner :
Zipcode Co., Ltd.

Architect :
Architects 49 Limited (A49)

Traffic Engineer :
Meinhardt (Thailand) Ltd.



AWARD
CATEGORY

04

LANDSCAPE ART / EXHIBITION (LE)

Art and exhibition responded to landscape architecture context such as Land Art, Earth Sculpture, Environmental Art, Installation Art/Media Art, etc.

* All projects need to be completely built and operated before the submission date.



MOON'S PHASES

Chiang Rai, Thailand

LANDSCAPE COLLABORATION CO., LTD. (LCO)

In 2022, the Mae Fah Luang Foundation celebrated its 50th anniversary with the exhibition “Light of Life.” This event brought together designers, landscape architects, and multimedia artists to create innovative artwork that prominently featured white light, symbolizing the foundation’s mission to serve as a guiding light for society. This aligns with the royal vision of Her Royal Highness Princess Srinagarindra, focused on enhancing the quality of life for individuals and communities.

Moon’s Phases captures the enchanting natural phenomenon of the moon, inviting viewers to stop and gaze upwards. This piece transforms the moon from the sky into a shimmering reflection on the water, even on nights when the moon’s glow is faint. The artwork ingeniously creates the illusion of a full moon in the lotus pond at the Mae Fah Luang Cultural Hall, using reflections to showcase both halves of the moon.



Additionally, the exhibition artfully simulates the moon’s orbit around the Earth, illustrating the phases of waxing and waning. This representation emphasizes the moon’s long-standing influence on ecosystems and living beings on our planet. Within just five minutes, visitors are immersed in a unique and powerful atmosphere, enriched by a night filled with light.

Overall, “Light of Life” not only celebrates the foundation’s legacy but also highlights the interconnections between nature and community, reinforcing the foundation’s commitment to social development and environmental awareness through artistic expression.

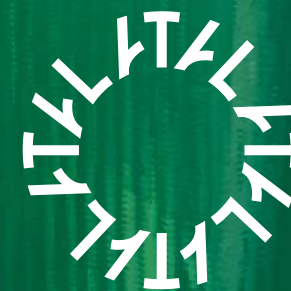
Lead Designer :
Touchapon Suntrajarn

Landscape Architect of Record :
Nopnara Katekaewmaneeratana

Client/Owner :
Mae Fah Luang Foundation under Royal Patronage

Prime Contractor :
HUI Co., Ltd.

Photography Credit :
Touchapon Suntrajarn
Google Map
Facebook Page City Cracker
Facebook Page I gonna lala, Facebook Omily Angel



AWARD
CATEGORY

05

COMMUNITY SERVICE / WORKSHOP (CW)

A landscape architecture project that create a participatory process between designers, community, and stakeholders to create place making that benefits the quality of life and living of the community.

* The participatory and design process must be completed and available to the public before the submission date.
* The submitted projects need to be located in Thailand only.



CITY LAB SARABURI

Saraburi, Thailand

SHMA SOEN COMPANY LIMITED

City Lab or “Urban Laboratory” is a temporary experiment to improve public spaces in a way that is easy to implement, quick, and low-cost, along with feedback collection from actual users. The results will be summarized as design guidelines to pass on to government driving long-term urban development.

The Pak Phraio subdistrict presents both challenges and opportunities in the following areas :

1. **Physical** : There are areas and buildings that can be improved to enhance usage.
2. **Economic** : There are longstanding businesses that are well-known in the community, along with new ventures and trade opportunities.
3. **Cultural** : It is a hub of the old town with diverse users, such as government offices, markets, temples, and schools, carrying significant cultural heritage and historical narratives.

Design Tools

1. Develop Public Spaces

: Create multifunctional spaces that can be used at various times, such as improving parking areas and activity.

2. Encourage Walking

: Develop walking route maps connecting important locations, and enhance physical elements like directional signs, historical markers, and photo spots with public art.

3. Test Public Activities

: Organize community-led events to stimulate economic, social, and cultural opportunities, such as a local treasure hunt or a photo exchange event.

Participatory Design Process

The participatory design process consists of seven steps :

1. Site Visit and Survey
2. Focus Group
3. Design Workshop
4. Public Hearing
5. Construction Process
6. Mock-up Test
7. Report



Lead Designer :
Yossapon Boonsom

Landscape Architect of Record :
Yossapon Boonsom

Client/Owner :
Healthy Space Forum



HAPPINESS LAB

Samut Prakan, Thailand

SHMA SOEN COMPANY LIMITED

In response to the rapid urban sprawl, Bang Kaeo has transformed from an agricultural and small-scale industrial area into a predominantly residential zone. This transformation has been largely influenced by significant developments like Forestias, Mega Bangna, AIA Building, Prince Hospital and MRT Yellow Line.

The Storied Place team, which is part of the Forestias development project, aims to enhance the surrounding area based on the principles of 'A Happy City.' Our research indicates that happy cities are characterized by ample outdoor spaces for residents, favorable environments, safety, comfortable temperatures, clean air, and well-designed activities that promote social interactions.



Our design focuses on 'Happiness for All,' which can be divided into three core pillars :

1. **People** - emphasizing social acceptance, safety, and equality,
2. **Planet** - prioritizing sustainability, environmental health, and biodiversity
3. **Place** - focusing on usability, activity types, and community ownership. The design process is structured into four phases:
4. **Site Survey and Analysis**
- Identifying problems, potentials, weaknesses, and strengths through surveys and interviews with stakeholders.

5. **We Walk** - Using data from the analysis phase to organize activities that explore possibilities together with the local community. Workshops is head to gathering in-depth insights from participant happiness in the past, present, and future.

6. **We Create** - Organizing a workshop to verify data with stakeholders and providing each group the opportunity to design their dream Masterplan.

7. **Vision Plan** - Consolidating the Masterplans from each group to create a shared vision for the area and presenting a pilot project to stimulate further neighborhood development.

Lead Designer :
Yossapon Boonsom

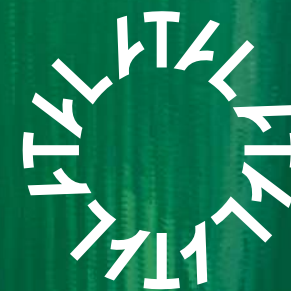
Landscape Architect of Record :
Kirin Tanglertpanya

Client/Owner :
Storied Place Company Limited

Project manager :
wel!park

process :
Sonjai House



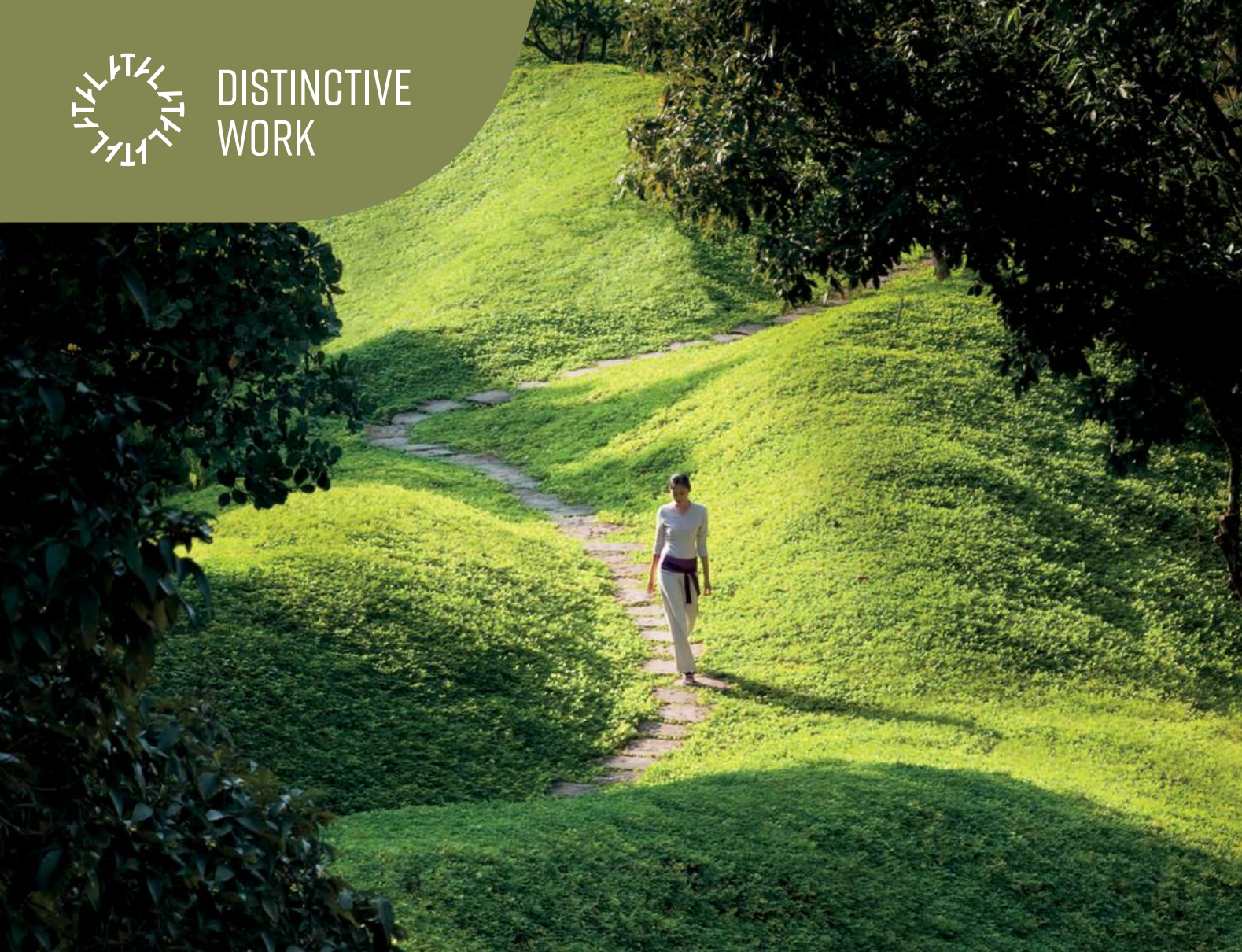


AWARD
CATEGORY
06

DISTINCTIVE WORK

A distinctive and memorable landscape architectural project that has maintained the original design (or really close to its original conditions). The work which is demonstrating the development of landscape architecture in Thailand and having significant impact to the public and neighborhood, or providing educational values. To be a distinctive landscape architectural works from the past to the present, it must be completely built within the past 15 to 50 years, regardless of the type of projects, whether it is a private or a public area. The project must be located in Thailand.

* The project needs to be nominated by a member of the Thailand Association of Landscape Architects. The nominee needs to give a summary of the project's value and memorable aspects along with a brief description and images.



PHULAY BAY, A RITZ-CARLTON RESERVE

Krabi, Thailand

PATTARAPAN RUKKULCHON, ภกส103

Phulay Bay, a Ritz-Carlton Reserve, a luxury resort property located in Krabi, the landscape design for Phulay Bay included expansion phase, enhancements and renovations to the existing accommodations. Completed in 2009 the renovation includes 45 villa keys, a reception and business centre, dining facilities and a spa.

The architecture and landscape carefully integrates the existing environment with a contemporary interpretation of Asian cultural heritage such as Chinese moon gates, Indian motifs in walls, Japanese rock gardens and Lanna-styled roofs, reflecting mythology, art and craftsmanship. The resulting design encourages guests and staff alike to interact with and shape the landscape through raking of sand or lighting candles in the ceremonial spaces. The resulting design thoughtfully shapes the user's experience and emotion through use of dramatic scales and ceremonial spaces.

The arrival and reception area consists of a series of courts, focusing attention inwards. Tall aubergine walls surrounded by sugar palms create an immediate contrast to the outside environment & inspiring a sense of magnificence and luxury. The next courtyard holds the reception pavilion surrounded by 6 metre candle walls mirrored by a reflection pool. High walls protect the observer both visually and physically, creating a private sanctuary. After reception, guests are greeted by the lily pond, a softening and tranquil natural feature before reaching the buggy pick-up area for guests to access their villas.

The location, height and orientation of each villa was carefully aligned to capture majestic views of the ever changing sky and the dramatic limestone-karst islands, while at the same time ensuring complete privacy and seclusion.

Not a single villa pool holds the same design, each customised to accommodate its unique surroundings, sights and space. In addition to aesthetic value, great care was placed on the existing natural systems such as mountain streams and existing trees. Working with hydro engineers, landscaped retention ponds, swales and water features were created to capture, cleanse and celebrate water. These natural water bodies therefore became both functional and visual utilities.

Significant effort was put into conserving the abundant existing trees, to the point where construction of a villa was cancelled to preserve a large cashew tree. The private gardens and public areas were crafted to take advantage of the mature trees, helping to frame views and providing a verdant visual backdrop.



Landscape Architect :
P Landscape Co., Ltd.

Client/Owner :
Piya International Co., Ltd.



ADDITIONAL ENTRIES

ADDITIONAL ENTRIES

Private Residences



THE NEST RESIDENCE LANDSCAPE

Bangkok, Thailand

TEERADON



PK RESIDENCE

Samut Prakan, Thailand

LANDSCAPE TECTONIX LIMITED

General Design: Residential Complex



ASPIRE ASOKE-RATCHADA

Bangkok, Thailand

1819 COMPANY LIMITED



THE KEY MRT PHETKASEM 48

Bangkok, Thailand

1819 COMPANY LIMITED

General Design: Residential Complex



CHEWAHOME RUNGSIT-PATHUM

Pathumtani, Thailand

ARCHIVE LANDSCAPE CO., LTD.



CHAIYAPRUEK KM 15

Samut Prakan, Thailand

LANDSCAPE ARCHITECTS 49 LIMITED



PARK HERITAGE, PATTANAKARN, SAMMAKORN

Bangkok, Thailand

ARSOMSILP COMMUNITY AND ENVIRONMENTAL ARCHITECT



XT EKKAMAI

Bangkok, Thailand

LANDSCAPE COLLABORATION CO., LTD. (LCO)



THE POLITAN AQUA

Nontaburi, Thailand

XSITE DESIGN STUDIO CO., LTD.



PARK ORIGIN RATCHATHEWI

Bangkok, Thailand

STUDIO JEDT

General Design: Commercial Space



THE EMSPHERE

Bangkok, Thailand

P.L. DESIGN CO., LTD.



HORME CAFÉ NONTHABURI

Nonthaburi, Thailand

SHMA SOEN COMPANY LIMITED



THE STANDARD

Bangkok, Thailand

LANDSCAPE COLLABORATION CO., LTD. (LCO)



KING POWER RANGNAM

Bangkok, Thailand

LANDSCAPE COLLABORATION CO., LTD. (LCO)



CENTARA MIRAGE RESORT MUI NE

Phan Thiet, Vietnam

XSITE DESIGN STUDIO CO., LTD.



EKKAMAI DINING NEIGHBORHOOD

Bangkok, Thailand

REAL SPACE MAKER CO., LTD.

General Design: Hospitality



AMARI PATTAYA (RENOVATION)

Chon Buri, Thailand

P.L. DESIGN COMPANY LIMITED



OUTRIGGER KOH SAMUI BEACH RESORT (REBRANDING AND RENOVATION)

Surat Thani, Thailand

SHMA SOEN COMPANY LIMITED



ANANTARA KOH YAI RESORT & VILLAS

Phang Nga, Thailand

POORITAT KUNURAT / PROUD DESIGN CO., LTD.



LA FLORA, KHAO LAK

Phang Nga, Thailand

STUDIO JEDT



MALADEE RENDEZVOUS HOTEL

Chiangmai, Thailand

STUDIO TAILA COMPANY LIMITED

General Design: Institution / Campus



UOB PLAZA BANGKOK

Bangkok, Thailand

LANDSCAPE COLLABORATION CO., LTD. (LCO)

General Design: Public Space Private Owned



ONE UDOMSUK HAPPINESS PARK

Bangkok, Thailand

1819 COMPANY LIMITED



**GRAND BANGKOK BOULEVARD
RATCHAPHRUEK - PINKLAO : PARK**

Bangkok, Thailand

STUDIO TAILA COMPANY LIMITED

General Design: Public Space Private Owned



BAAN KLANGMUANG LADPHAO 101 : PARK

Bangkok, Thailand

STUDIO TAILA COMPANY LIMITED



BANGKOK BOULEVARD SIGNATURE RAMA 5

Nonthaburi, Thailand

STUDIO JEDT



**HAPPY GIRAFFE PLAYGROUND,
VERVE RAMKHAMHAENG- WONGWAEN**

Bangkok, Thailand

STUDIO JEDT

General Design: Public Space Non Private Owned



WAT HUALAMPHONG RUKKHANIWET PARK

Bangkok, Thailand

SHMA SOEN COMPANY LIMITED



**MAHAVIR SEVA SADAN (MSS)
REHABILITATION AND RESEARCH CENTRE**

Bangkok, Thailand

SHMA SOEN COMPANY LIMITED



CHAWAE EDUCATIONAL INNOVATION CENTER

Rayong, Thailand

ARSOMSILP COMMUNITY AND ENVIRONMENTAL ARCHITECT



KLONG SOMTAWIN

Sarakham, Thailand

STUDIO TAILA COMPANY LIMITED



HIDDEN SPACE

Bangkok, Thailand

LANDSCAPE ARCHITECTS 49 LIMITED



NINJA HOUSE

Bangkok, Thailand

VVDESINE LANDSCAPE ARCHITECTURE COMPANY LIMITED



SALES OFFICE, MITI CHIVA KASET STATION

Bangkok, Thailand

STUDIO JEDT



TALA WORKSHOP

TALA WORKSHOP

“ เรียนรู้จากภูเขา
LANDSCAPE CAMP ”



31 OCT - 3 NOV 2024

By TALA X DOBCLX
JaiBaan Studio X Shma Soen

The Landscape Camp revealed the vital connections between human societies and their natural ecosystems. Through exploring Chiang Dao's diverse terrains, participants witnessed how ecosystems truly shape communities and were able to answer the question of

‘Why do we need to understand nature before designing cities?’



Mae Ka Watershed provided insights into nature's fundamental elements and became a starting point for connecting with nature.



Nam Ok Hu illustrated Lanna's sacred bond with nature.



Nunienoi Wetland's innovative farming methods showed how agriculture can nurture biodiversity.

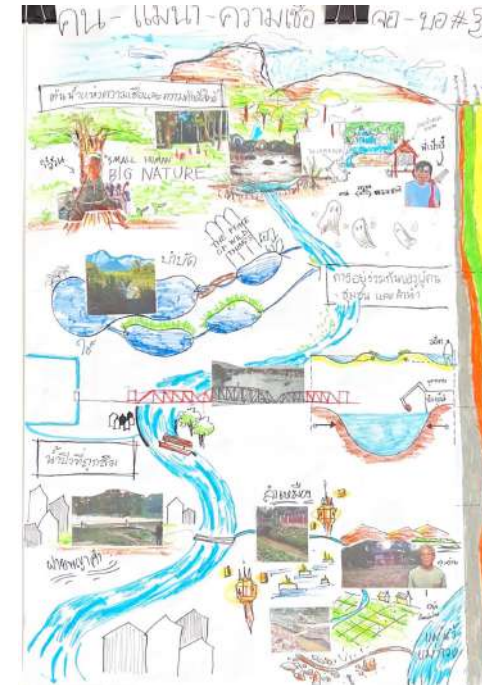
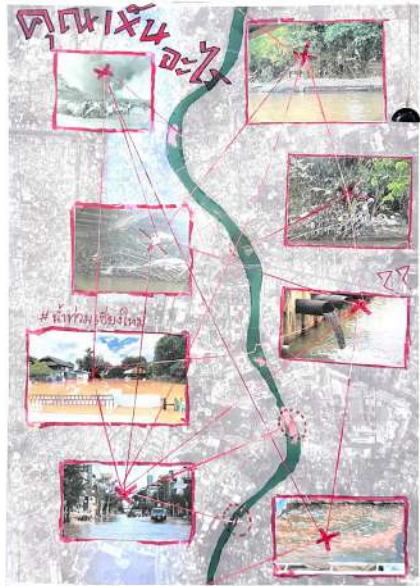


Throughout the journey, exchanges with experts and fellow participants revealed diverse perspectives on building a sustainable future through collaboration.



The journey concluded at the Ping River, where centuries-old water management wisdom meets modern urban challenges, highlighting nature's role in sustainable city design.

Journey Outcomes

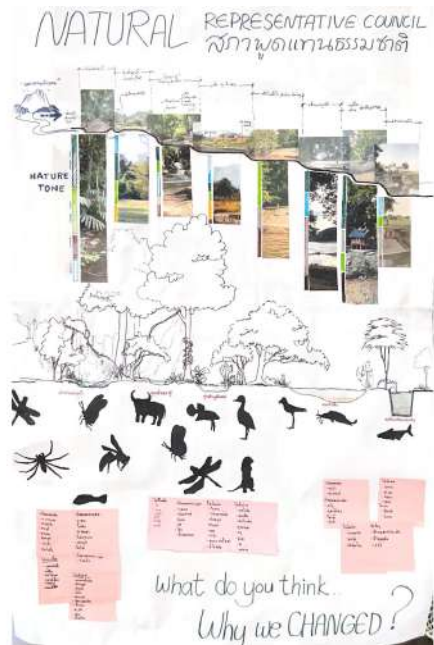


**GROUP 3
POWER DYNAMICS ALONG THE RIVER :**

A color spectrum showing the shift from nature's dominance in upstream forests to human control in urban areas, revealing changing relationships between people, beliefs, and natural systems

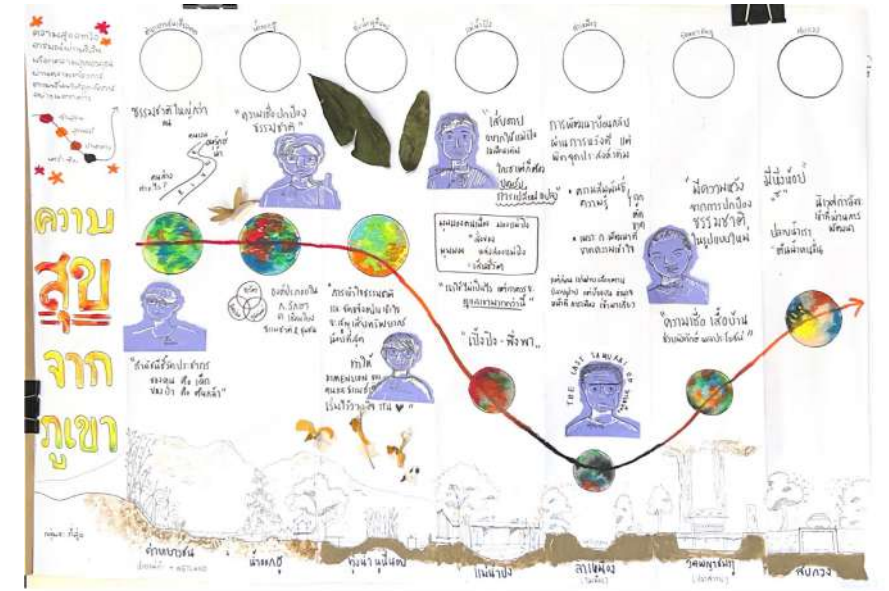
**GROUP 1
THE CATFISH GUARDIAN :**

Revealed how spiritual beliefs and local customs act as natural guardians of water resources through community reverence.



**GROUP 2
NATURE'S COUNCIL :**

Voicing environmental concerns from different ecosystems and outlined conservation strategies, bridging the gap between environmental needs and human development.



**GROUP 4
MOUNTAIN HAPPINESS :**

A visualization showing different shades of happiness and experiences people encounter from mountain to urban areas, featuring a river cross-section with real local soil colors.



DOBCL

Innovative Variety for Your Design



BioWood®

GRM (Thailand) Co.,Ltd
55/32 Mu Ban Klang Mueang The Paris Ratchawipha
Lat Yao, Chatuchak Bangkok 10900 Thailand
Hotline : 086-4189584 (โทร) 081-3579456 (ดู)



Oase RAIN BIRD WATER INNOVATION **WATERSCAPE**
Fountain Technology
Water Garden
Irrigation.



WATERPRO THAILAND CO.,LTD.
WATER INNOVATION

Waterpro Thailand CO., LTD.

T : +662-194-8182-3
W : waterprothailand.com
FB : @WATERPROTH
LINE : waterprothailand

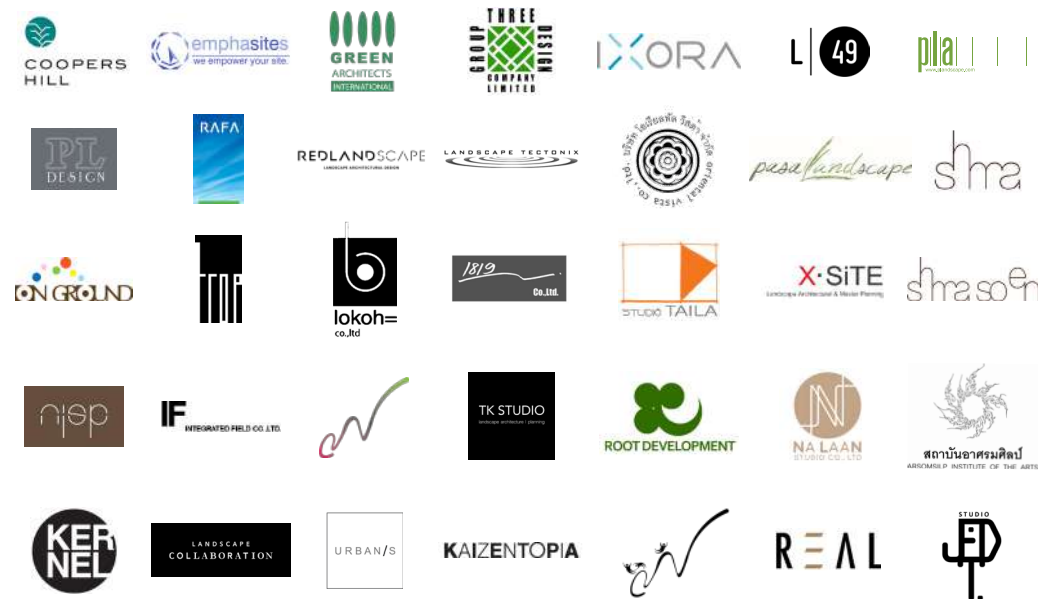
TALA NITIVI PARTNERS



SPACIAL THANKS TO

- ART GREEN GARDENING CO., LTD.**
for Spicy Papaya Salad & Grilled Chicken
- ZILLION INNOVATION CO.,LTD.**
+ FAREASE CERAMIC CO., LTD.
for Fresh Sushi & Sashimi
- M.J.Gardens Co.,Ltd**
for Delicious Pork Leg Stew with Rice (Khao Kha Moo).
- KONGSAGUAN ENGINEERING (1993) CO., LTD.**
for Juicy Burgers & Flavorful Sausages
- SOR. AROON CONCRETE PATHUMTHANI CO.,LTD**
for Refreshing Sweet Soup with Assorted Toppings (Cheng Sim Ei)
- GRM (THAILAND) CO.,LTD.**
for Crisp and Chilled Beer
- D.O.BOND COMPANY LIMITED**
for iPad: The Ultimate Game Prizes

TALA MEMBERS



2024 TALA PROFESSIONAL AWARDS COMMITTEES

TALA COMMITTEE 2023-2025

- President**
Munggorn Chaijaroenmaitre
- Vice President - Secretary-General**
Chanipat Chavananont
- Vice President**
Asst Prof. Pranisa Boonkham
Saengtham Nisapa
Ratchawoot Wonghukhan
Somprach Likitlucha
- Committee**
Sarawut Autama
Vongvasu Chalosisap
Touchapon Suntrajarn
Palang sittiaworn
Anawut Prapunwong
Kiatkamon Nilapornkun
Treenate Phisitsin
Sajjapongs Lekuthai
Kirin Tanalertpanya
- Treasurer**
Chirayu Twipaopakin

2024 TALA PROFESSIONAL AWARD NIGHT COMMITTEE

- Chairperson**
Chanipat Chavananont
- Team**
Treenate Phisitsin
Kirin Tanalertpanya
Gullyawat Lertpeerakorn
Sarawut Autama
Saengtham Nisapa
Patcharamai Saengow
Somprach Likitlucha
Ratchawoot Wonghukhan
Cherdchanok Treevanchai

AWARDS COMMITTEE

- Head of TALA AWARDS**
Associate Professor Dr. Sani Limthongsakul
- Committee Person**
Assistant Professor Dr. Tanasi Samphantharak Petyim
Assistant Professor Dr. Onumpai Samkhuntod
Assistant Professor Pudtan Chantarangkul
- Qualified Panels**
Munggorn Chaijaroenmaitre
Assistant Professor Shusak Janpathompong, Ph.D.
Associate Professor Kasama Polakit, PhD
Assistant Professor Apinya Limpai boon
- Jury Panels**
Asae Sukhyanga
Pongpiphat Changphan
Munggorn Chaijaroenmaitre
Assistant Professor Apinya Limpai boon
Assistant Professor Shusak Janpathompong, Ph.D.
Associate Professor Kasama Polakit, PhD
Rush Pleansuk

WORKSHOP

- Chairman**
Kirin Tanalertpanya
- Special Mentor**
Supawut Boonmahathanakorn
Assistant Professor Dr. Kanokwalee Suteethorn
Assistant Professor Warong Wonglangka

- Team**
Patcharamai Saengow
Siriprapa Yodket

- Video & Photography**
Nattawat Narkchaeng
Nawin Deangnul

AWARD BOOKLET

- Editor**
Sarawut Autama
- Graphic Design**
Studio Dialogue

**THAI ASSOCIATION
OF LANDSCAPE ARCHITECTS (TALA)**

12 Rama 9 Rd., Huamark, Bangkok, 10240

T : +662-369-3006

W : tala.or.th

E : tala@tala.or.th

© 2024 Thai Association of Landscape Architects

Further details are available on www.tala.or.th

All rights reserved. No part of this publication may be reproduced or transmitted in any form or by any means, electronic or mechanical, including photocopy or any storage and retrieval system, without written permission from the publisher.

Printed in Thailand



THE GREAT AWAKENING : 2024 TALA PROFESSIONAL AWARD COMPILATION

THE

GREAT

AWAKENING



TALA
AWARDS
2024